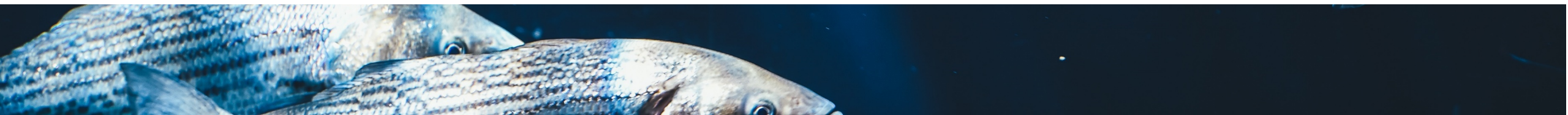




KnipBio

Enabling healthier, sustainable aquafeeds



Oceans of Today Can't Provide for Our Tomorrow



Photo: Marten van Dijk

- 3B+ dependent on oceans for protein
- Healthy Nutrition
- >80+% Fisheries at Capacity

KnipBio Snapshot



- Commercializing responsible single cell protein for aquafeeds
- Founded in 2013
- Located in the metro Boston area
- First commercial product ready late 2017

Timeline Overview

Incorporation

May 2013
2 early IP filings



MassChallenge "Gold"

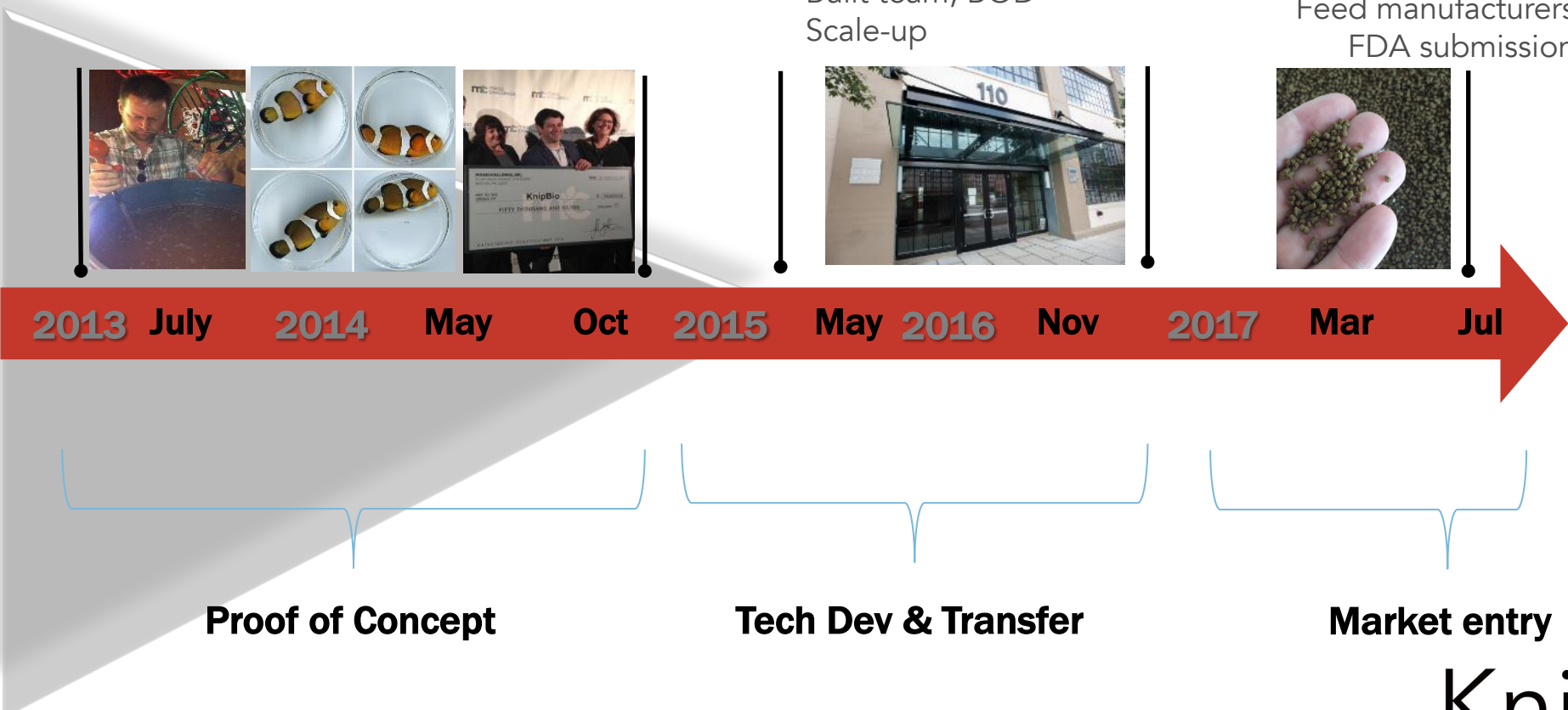
Financing

\$4.5M
Built team; BOD
Scale-up



Commercialization

Feed manufacturers
FDA submission



2013 July

2014 May

2014 Oct

2015 May

2016 Nov

2017 Mar

2017 Jul

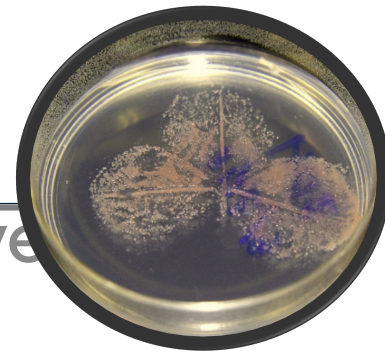
Proof of Concept

Tech Dev & Transfer

Market entry



KnipBio's Immuno-Nutrition Strategy



High-quality fishmeal replacement PLUS nutrients to improve health

Protein

Massive volumes, markets = commodity

Specialty molecules

Smaller volumes, specialty pricing



**KnipBio
Meal (KBM)**

KnipBio 

Demonstrating a Novel Protein to Capture Value

From “Feed to Fork” – Kampachi, a sashimi yellowtail



Diet	Growth (g)	Survival	FCR
Control	709.79 \pm 146.05 A	100	1.76
KnipBio (5%)	739.43 \pm 110.42 A	100	1.66



>70 panelists could NOT detect a taste difference

KnipBio 

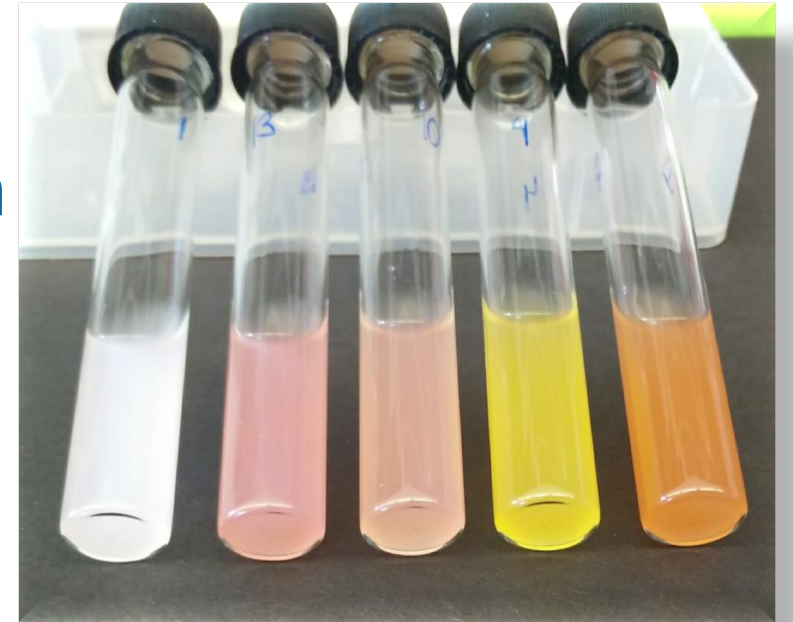
The Challenges Ahead

De-risking a novel product

Integration into the supply chain

Regulatory

Technology efficacy & scale-up



KnipBio

Enabling healthier, sustainable aquafeeds

Larry Feinberg, PhD
CEO

lfeinberg@knipbio.com

www.knipbio.com

[@knipbio](https://twitter.com/knipbio)



facebook.com/knipbio

KnipBio 