



High-resolution
Nitrate
measurements
– moored,
profiles, or
both?

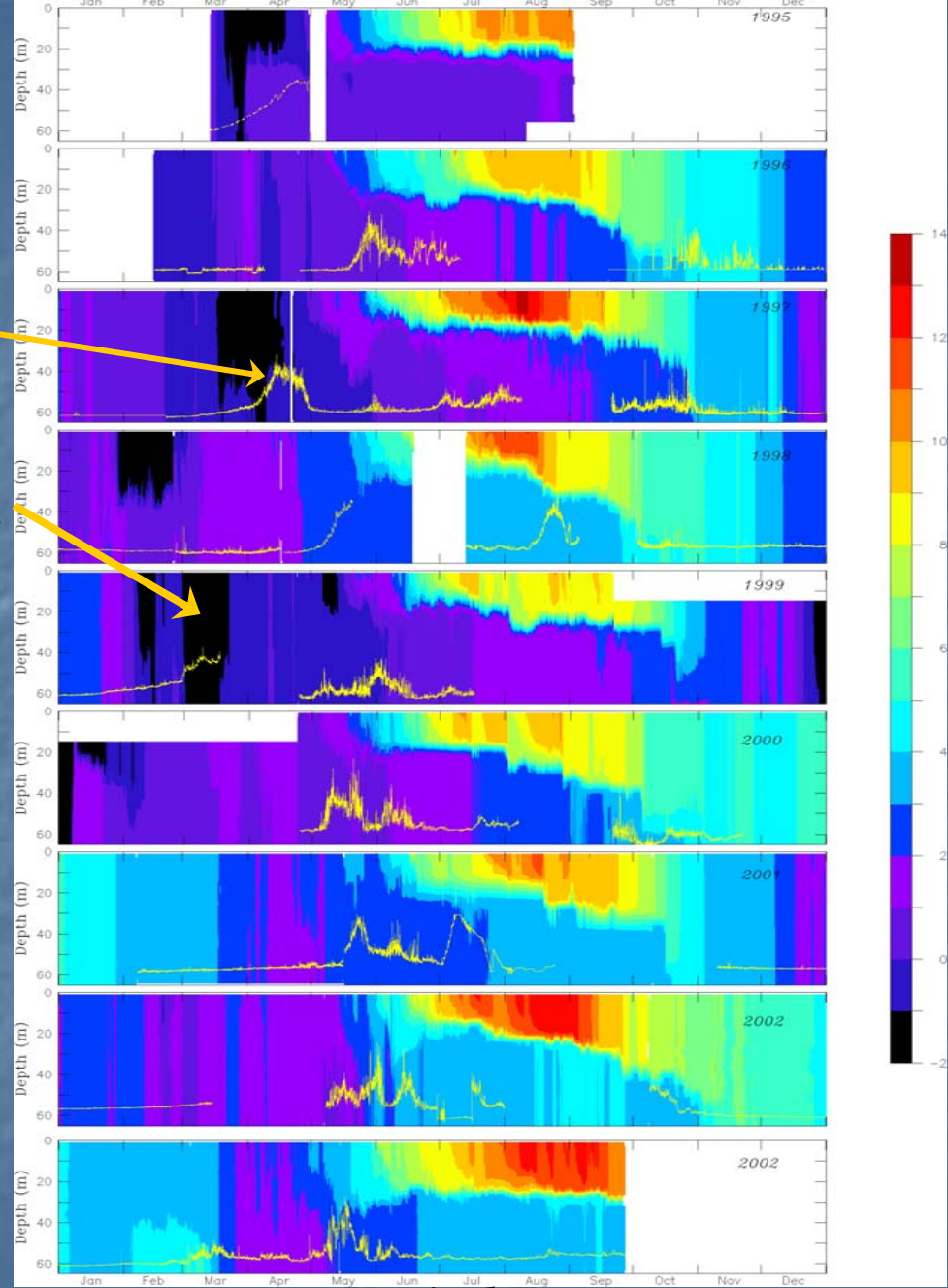
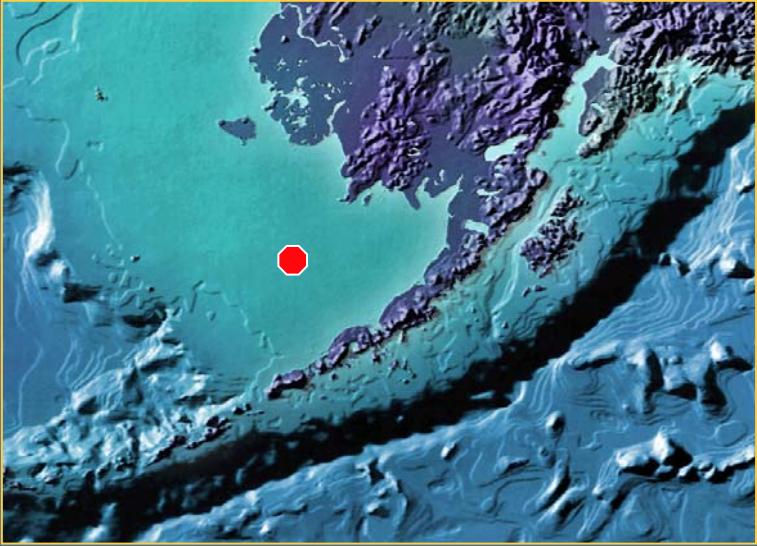
Sarah Thornton & Terry Whitledge
Institute of Marine Science
University of Alaska Fairbanks

Long-Term Bio-physical Measurements



Fluorescence (11m)

Ice over the mooring

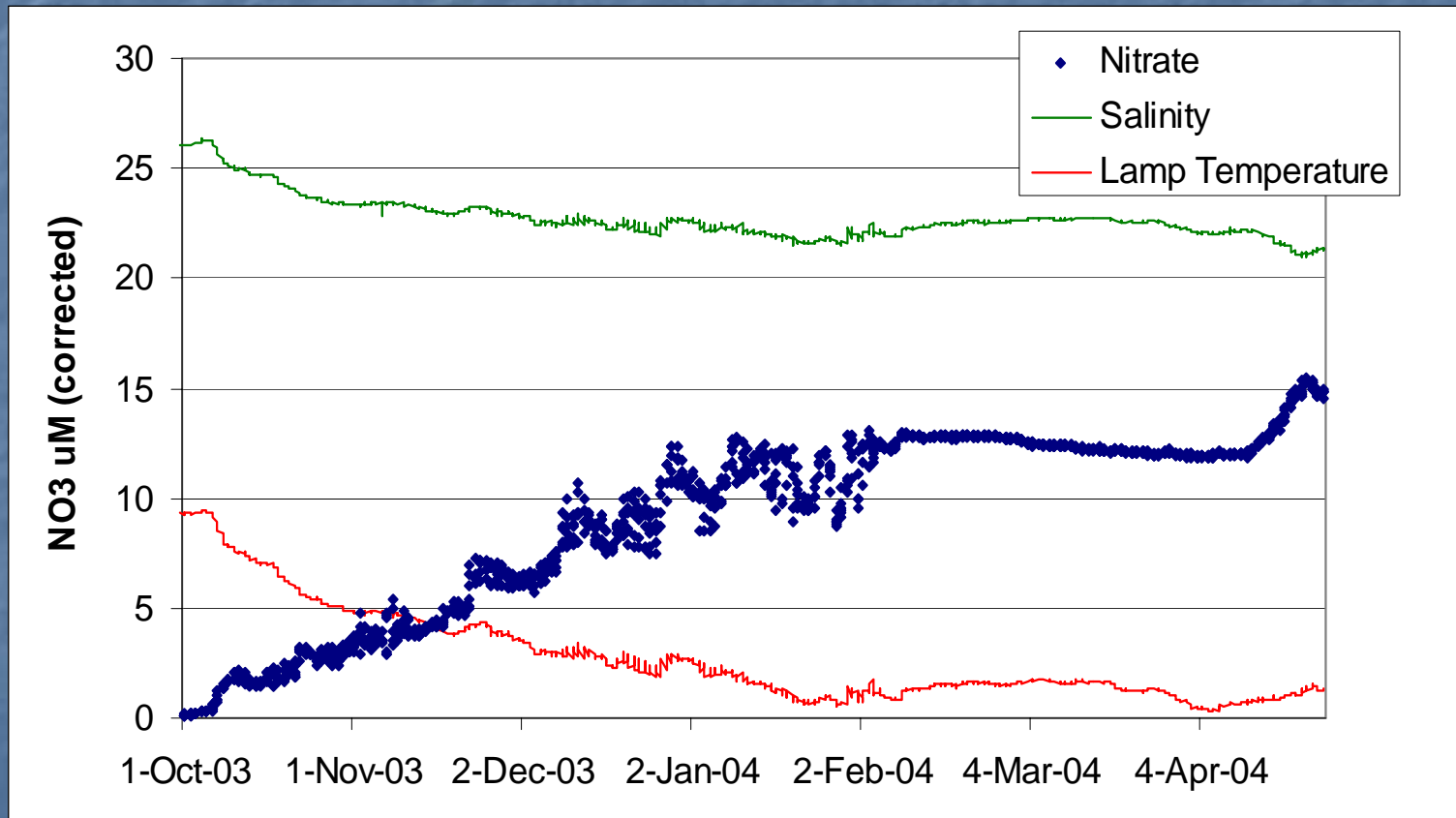


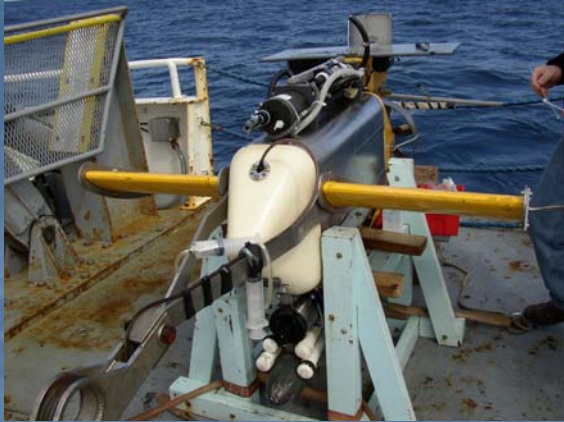
Vertical Temperature Structure

M2 mooring site, 70m isobath

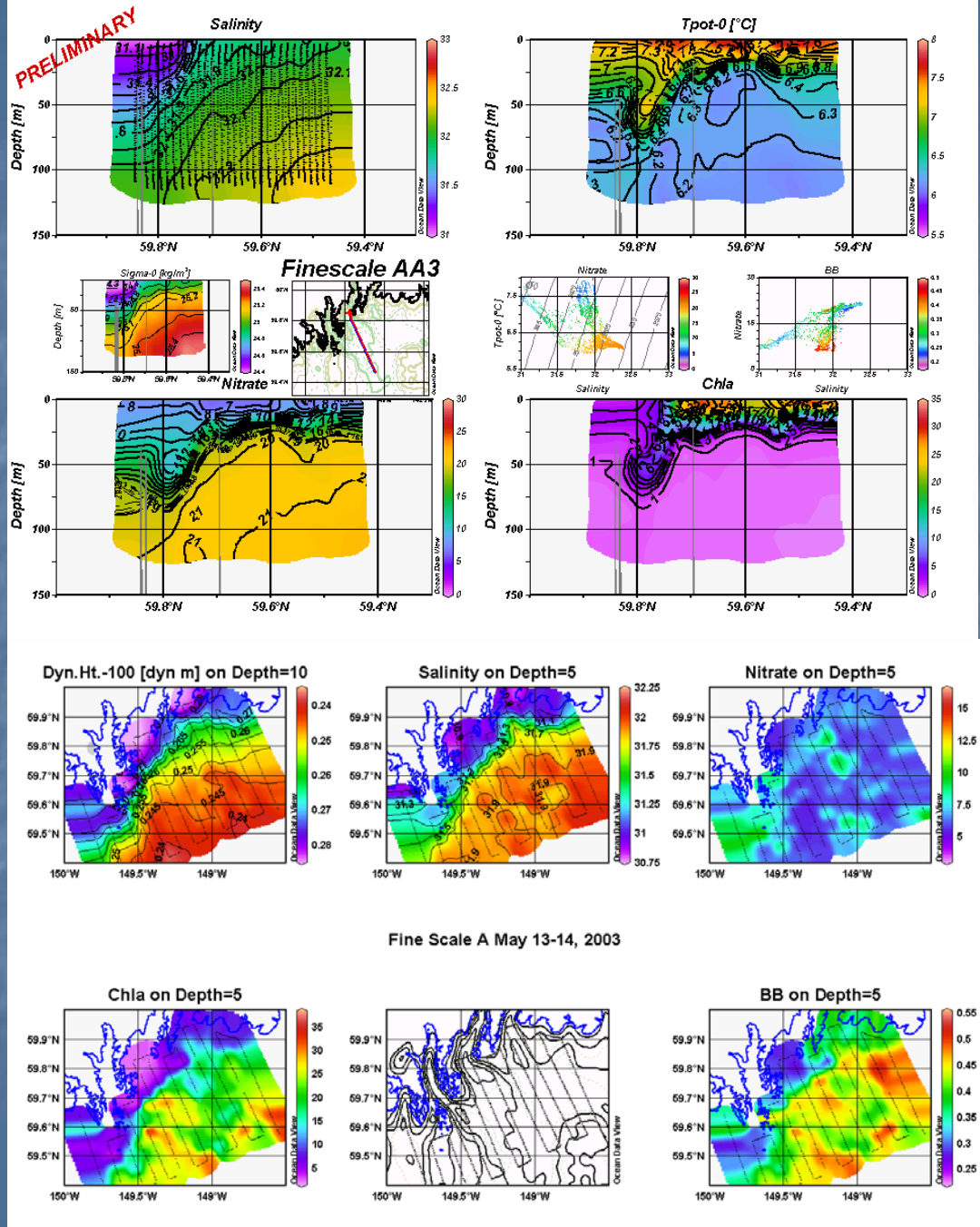
Oct03 – Apr04

13.5 m depth; sample interval = 4 hours



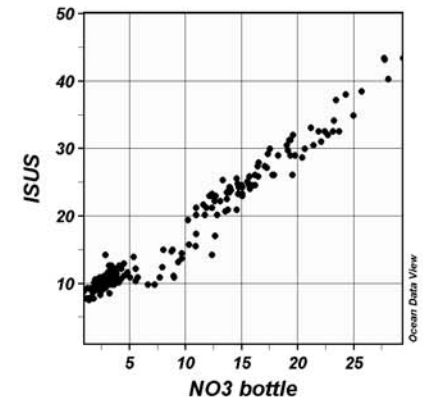
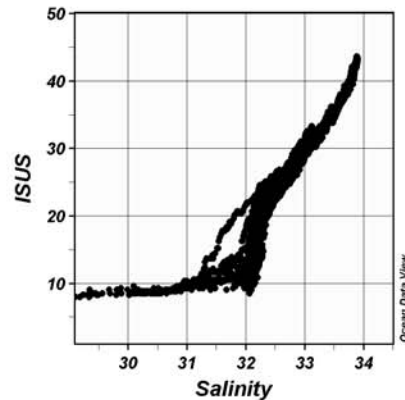
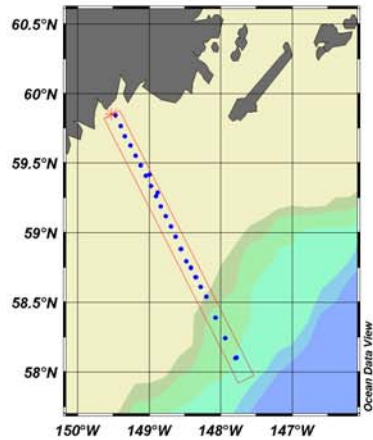
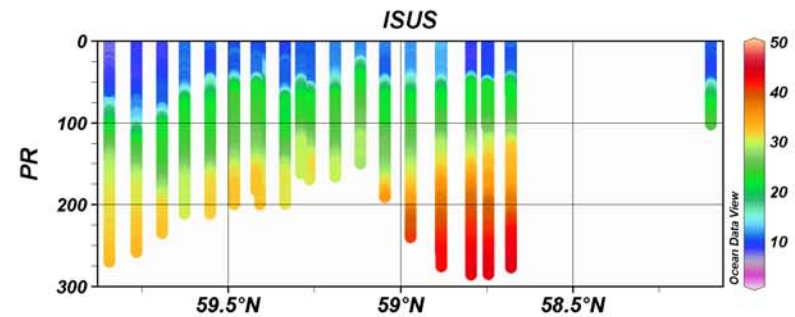
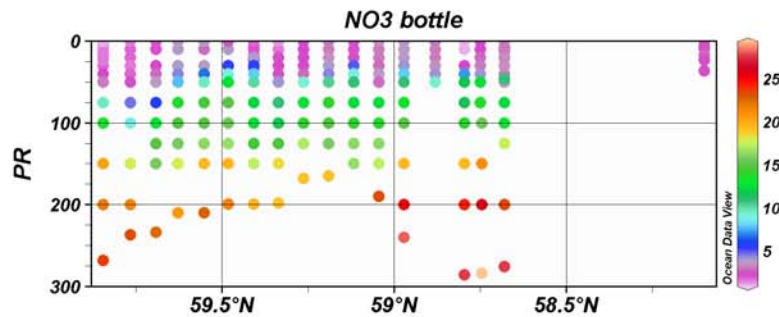
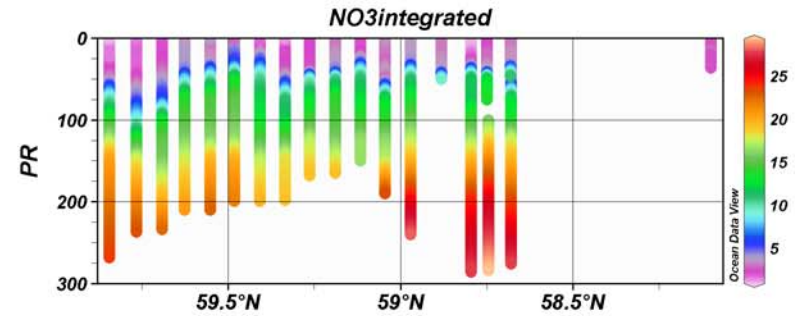
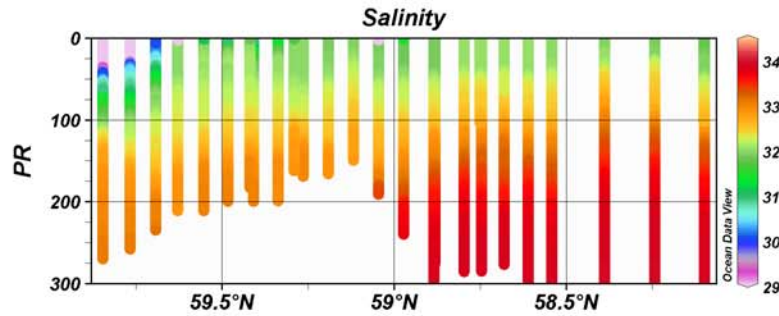


From
Musgrave,
Pegau &
Whitledge



Nitrate profiles on CTD sections

Oct2003 Seward Line



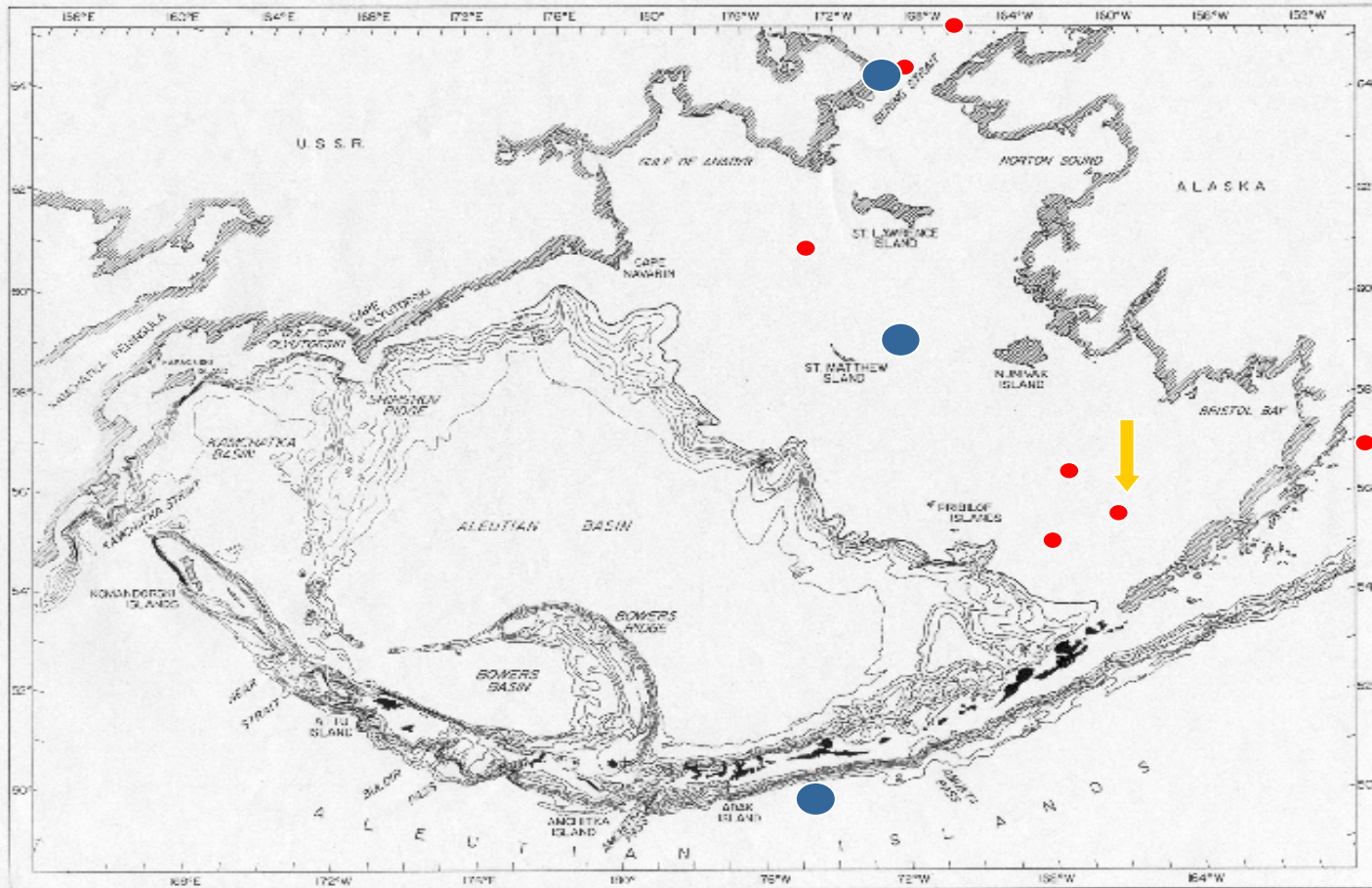
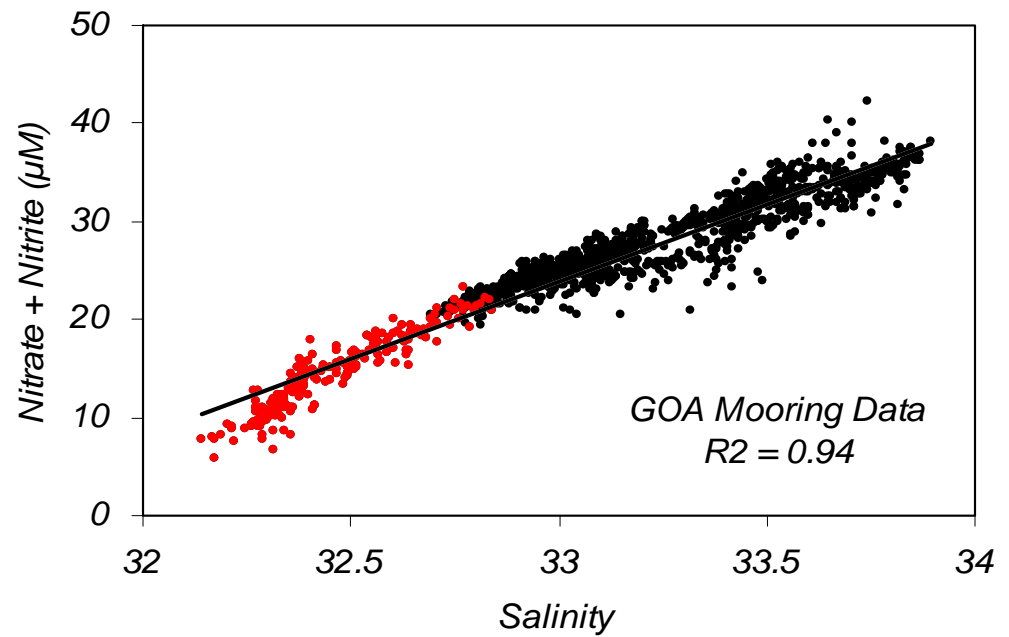
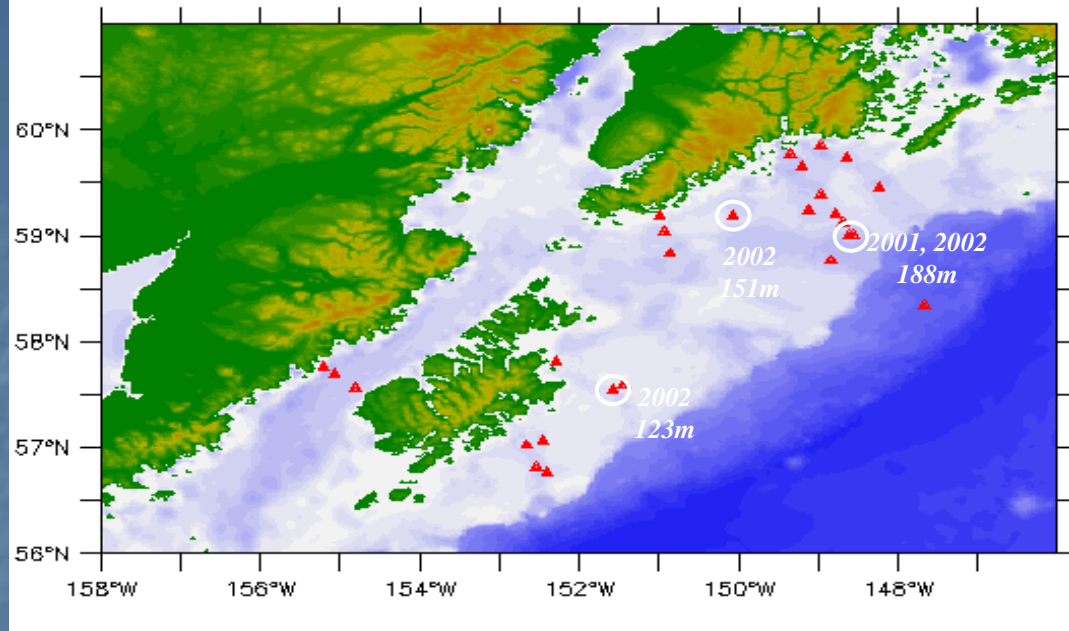


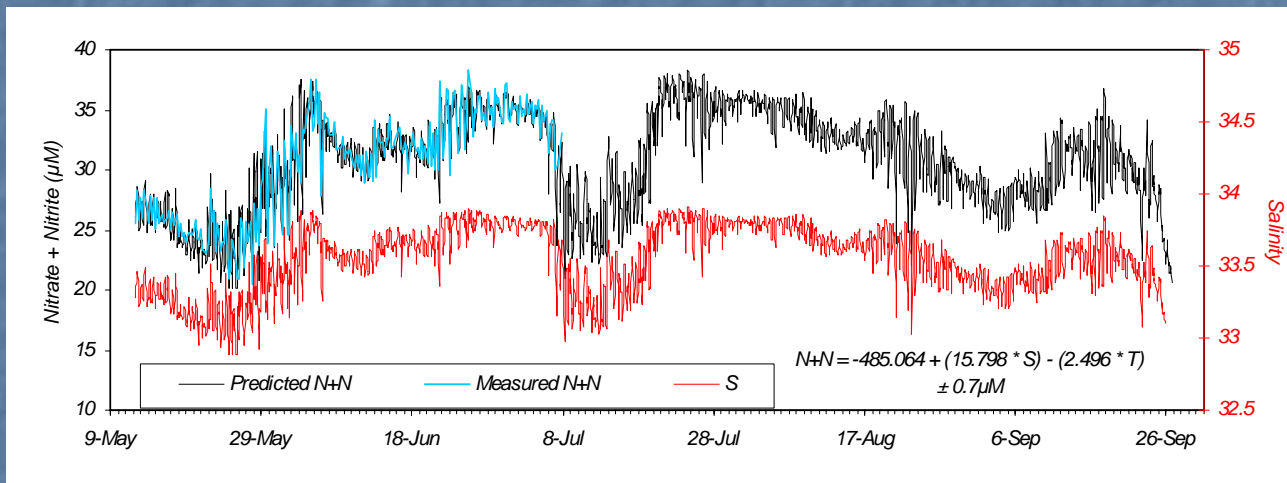
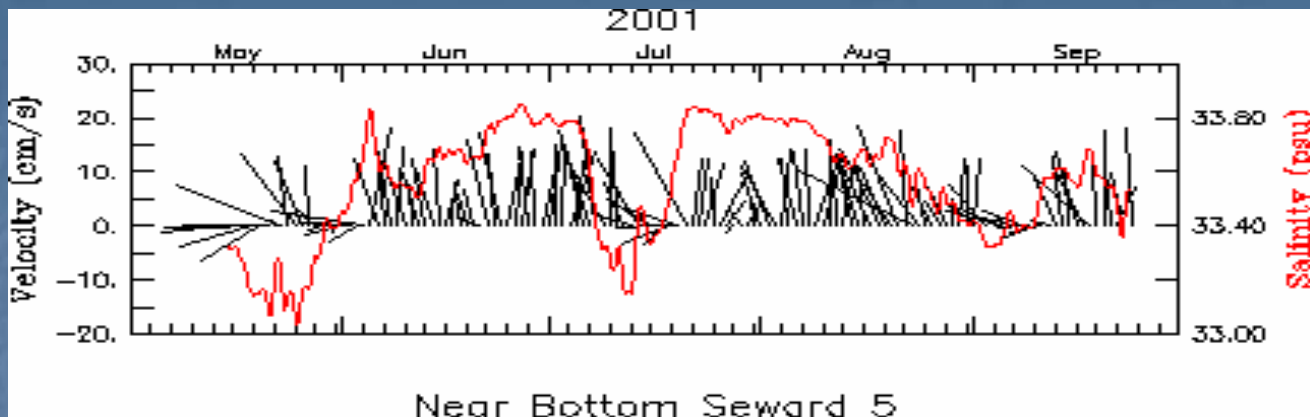
Figure 1. Bathymetry of the Bering Sea Basin and geographic names used in the text

AOOS Draft Mooring Plan

Present Moorings
Planned Moorings



Compliments of Calvin Mordy



Compliments of Calvin Mordy

M2

