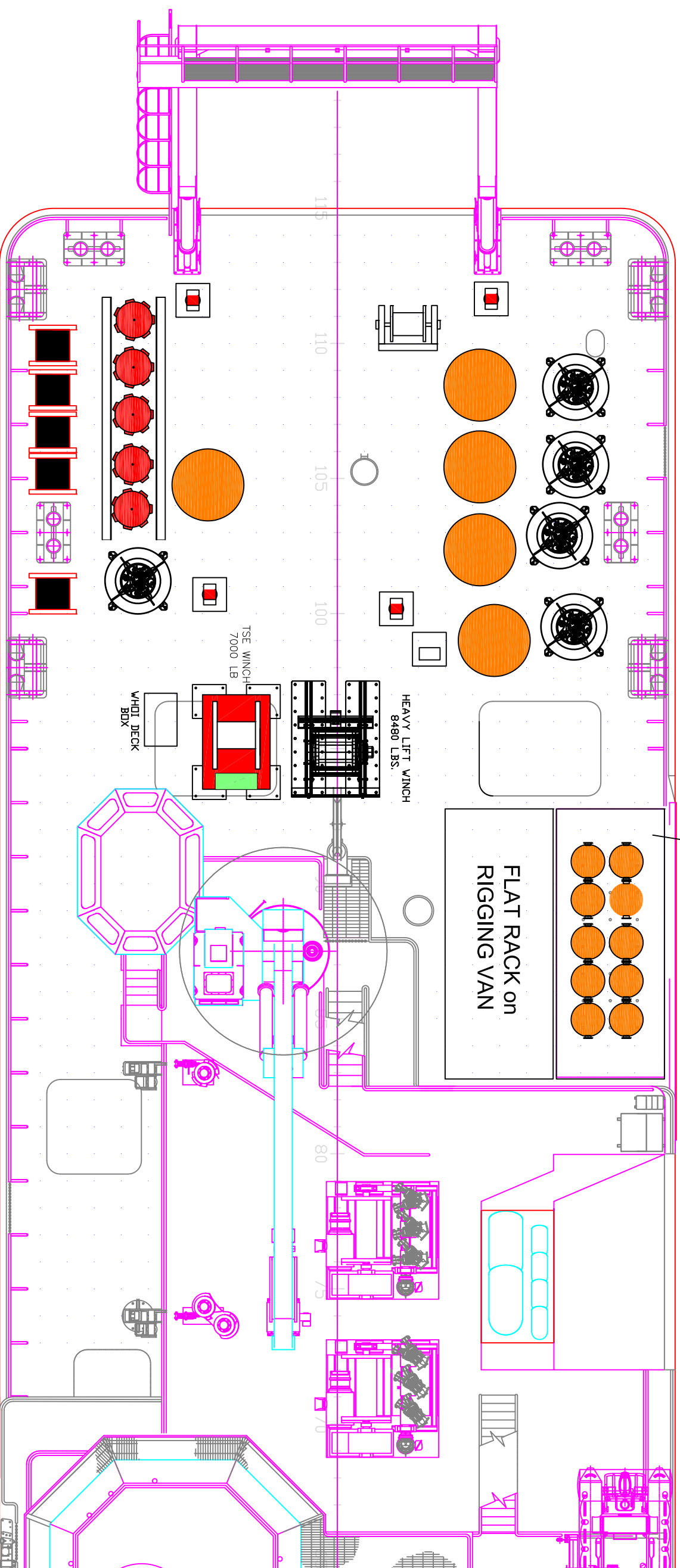


- WEIGHTS:**
- RIGGING VAN: 14780 lbs
 - FLAT RACK (BRB): 10200 lbs
 - TSE WINCH: 7000 lbs
 - HEAVY LIFT WINCH w/Base: 10780 lbs
 - TUGGERS (4 EA) @700 lbs
 - CONTROLLER STAND: 550 lbs
 - SPHERES: (x 5 ea) @3200 lbs
 - WHOI ANCHORS: (x 5 ea) @ 7000 lbs
 - PROFLER SURFACE BUOY's (x 5 ea) @1700 lbs
 - FLAT RACK w/ HLW POWER PACK: tbd lbs
 - STORAGE VAN: tbd lbs

SUB TOTAL: 105610 lbs

10 BRB FLOATS on
STORAGE VAN



- WEIGHTS:
- RIGGING VAN: 14780 lbs
- FLAT RACK: tbd lbs
- TSE WINCH: 7000 lbs
- STORAGE VAN: tbd lbs
- HEAVY LIFT WINCH with BASE: 10780 lbs
- TUGGERS (4 EA) @700 lbs
- CONTROLLER STAND: 550 lbs
- SURFACE BUOY (3 ea): 8000 lbs
- BARF (3 ea): 10200 lbs
- SEA-MAC WINCH: 1700 lbs

SUB-TOTAL: 92210 lbs

