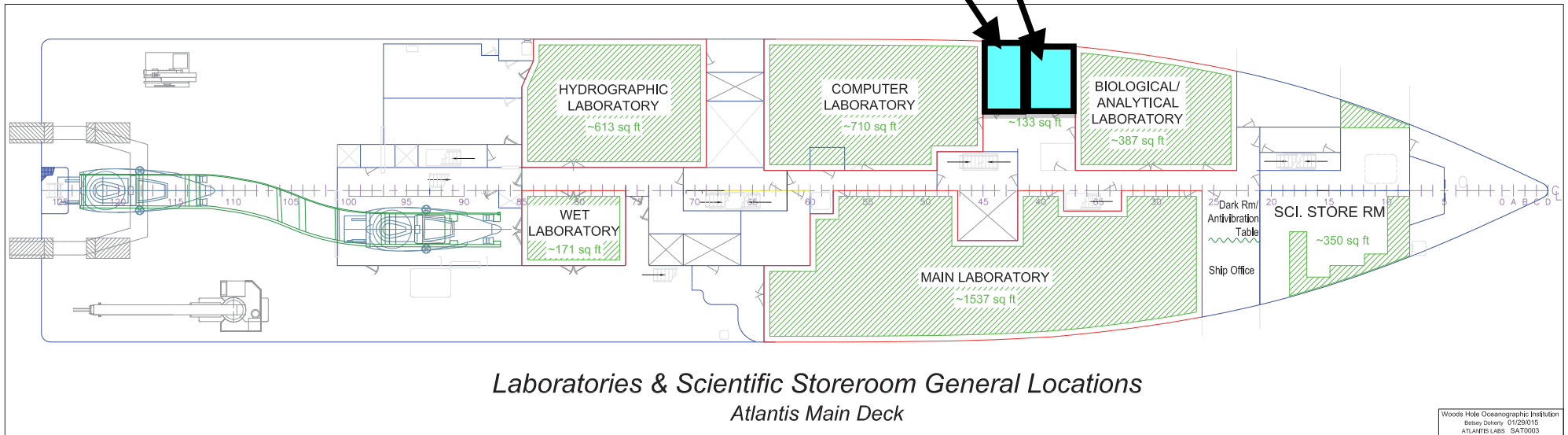
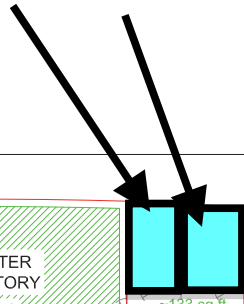


Walk-ins



*Laboratories & Scientific Storeroom General Locations
Atlantis Main Deck*

KEY

-  COMPUTER HUB
-  SHIP EQUIP -KEEP CLEAR
-  EMERGENCY ESCAPE BREATHING DEVICE
-  72" POWER STRIP, 6 PLUGS
-  FIRE EXTINGUISHER
-  SCIENCE SEA WATER
-  CABLE PASS THRU
-  COMPRESSED AIR

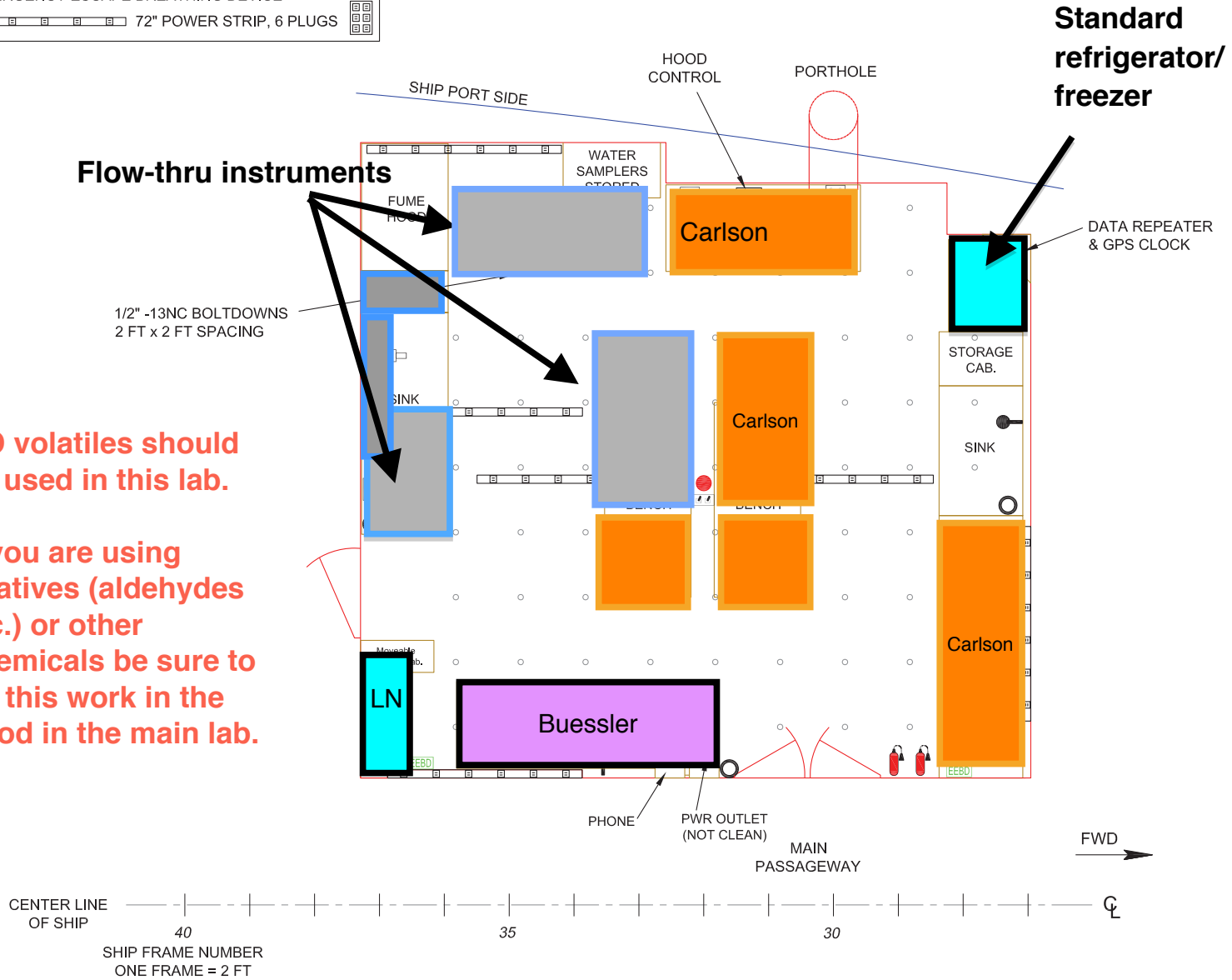
UNISTRUT:
 BULKHEADS
 2 FT SPACING
 OVERHEAD FORE/AFT,
 FULL LENGTH OF LAB

 ALL POWER CLEAN UNLESS NOTED

Flow-thru instruments

NO volatiles should be used in this lab.

If you are using fixatives (aldehydes etc.) or other chemicals be sure to do this work in the hood in the main lab.




BIOLOGICAL/ANALYTICAL CLEAN LABORATORY
Atlantis Main Deck, Room 1-27-2

KEY

 COMPUTER HUB

 SHIP EQUIP -KEEP CLEAR

 EMERGENCY ESCAPE BREATHING DEVICE

 72" POWER STRIP, 6 PLUGS

 FIRE EXTINGUISHER

 SCIENCE SEA WATER

 CABLE PASS THRU

 COMPRESSED AIR

UNISTRUT:

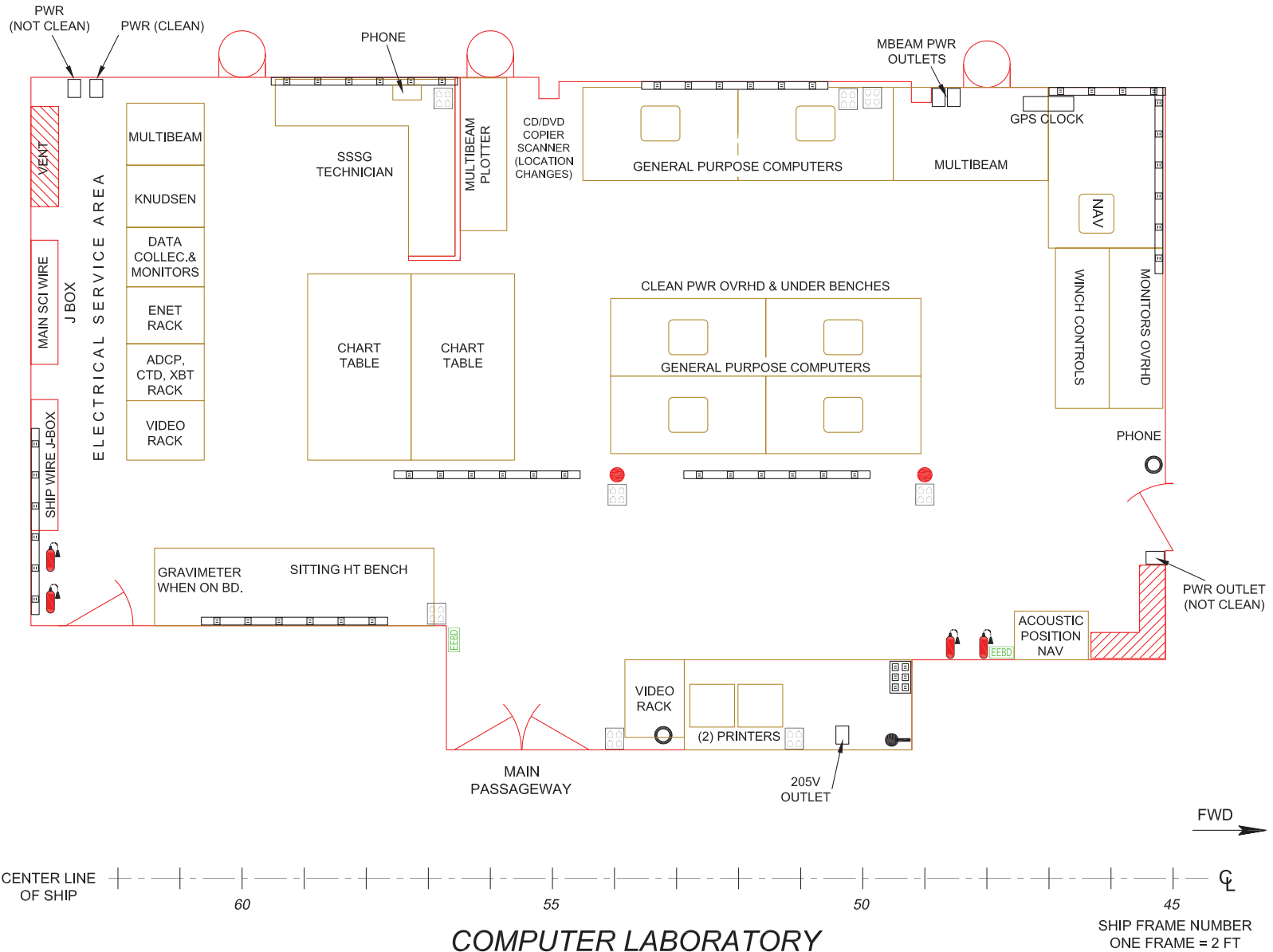
BULKHEADS

2 FT SPACING

OVERHEAD FORE/AFT,

FULL LENGTH OF LAB

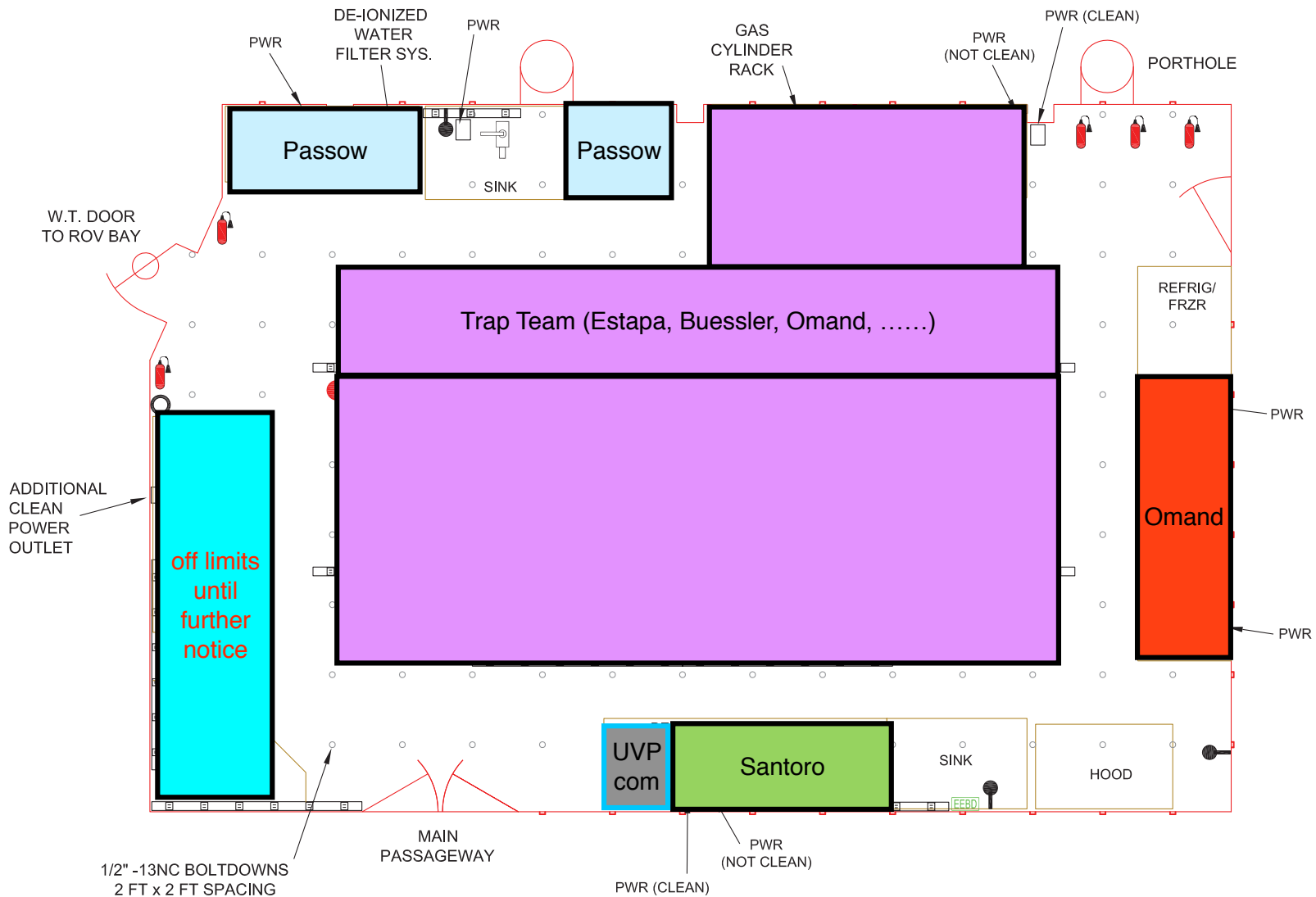
ALL POWER CLEAN UNLESS NOTED



COMPUTER LABORATORY
Atlantis Main Deck, Room 1-45-2



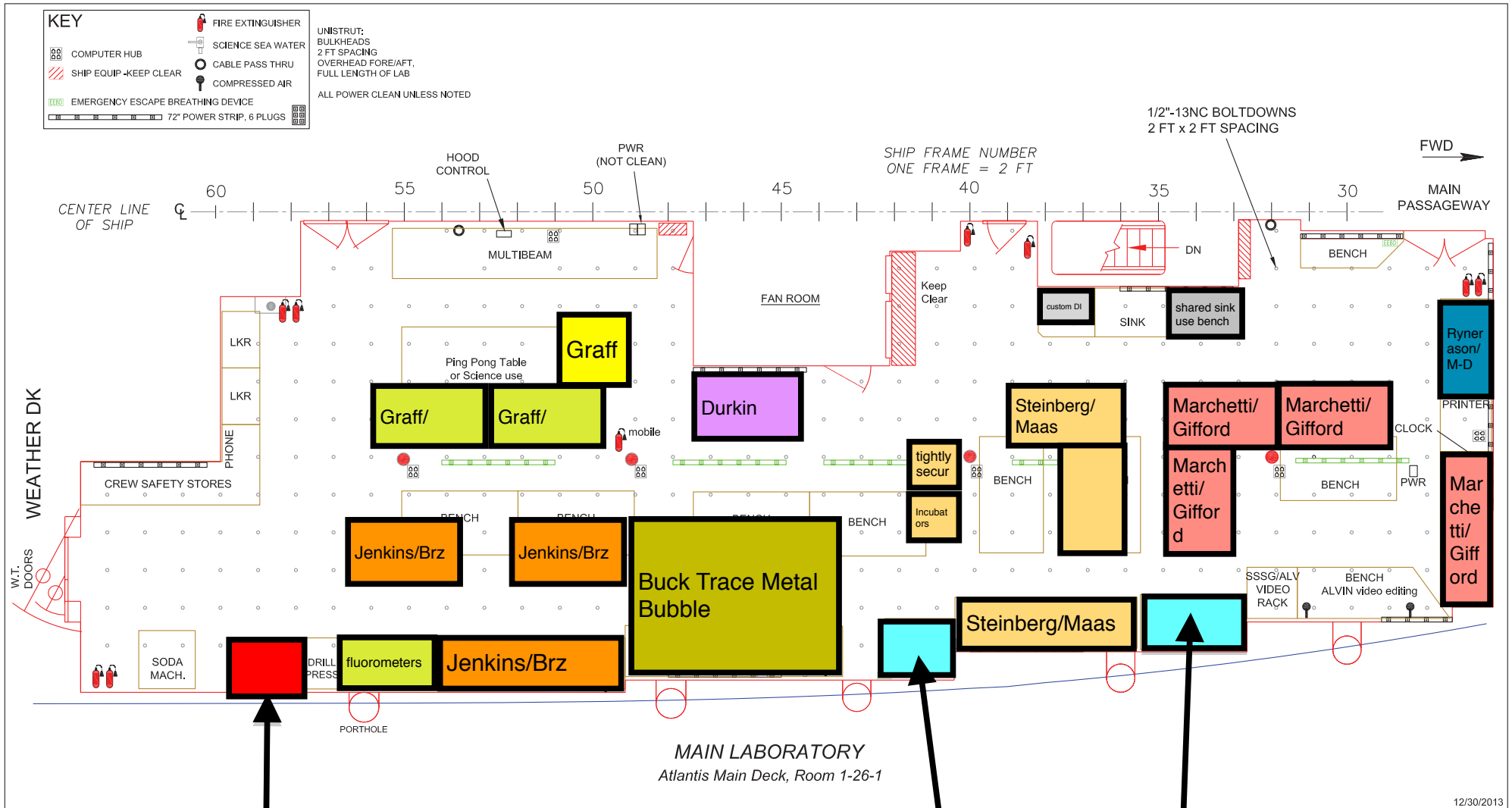
FULL LENGTH OF LAB
ALL POWER CLEAN UNLESS NOTED



FWD →



HYDROGRAPHIC LABORATORY
Atlantis Main Deck, Room 1-64-2




**Primary
chemical
hood**

Please use this as the primary hood for dispensing fixatives and other chemicals to minimize exposure by people and to not compromise sensitive measurements

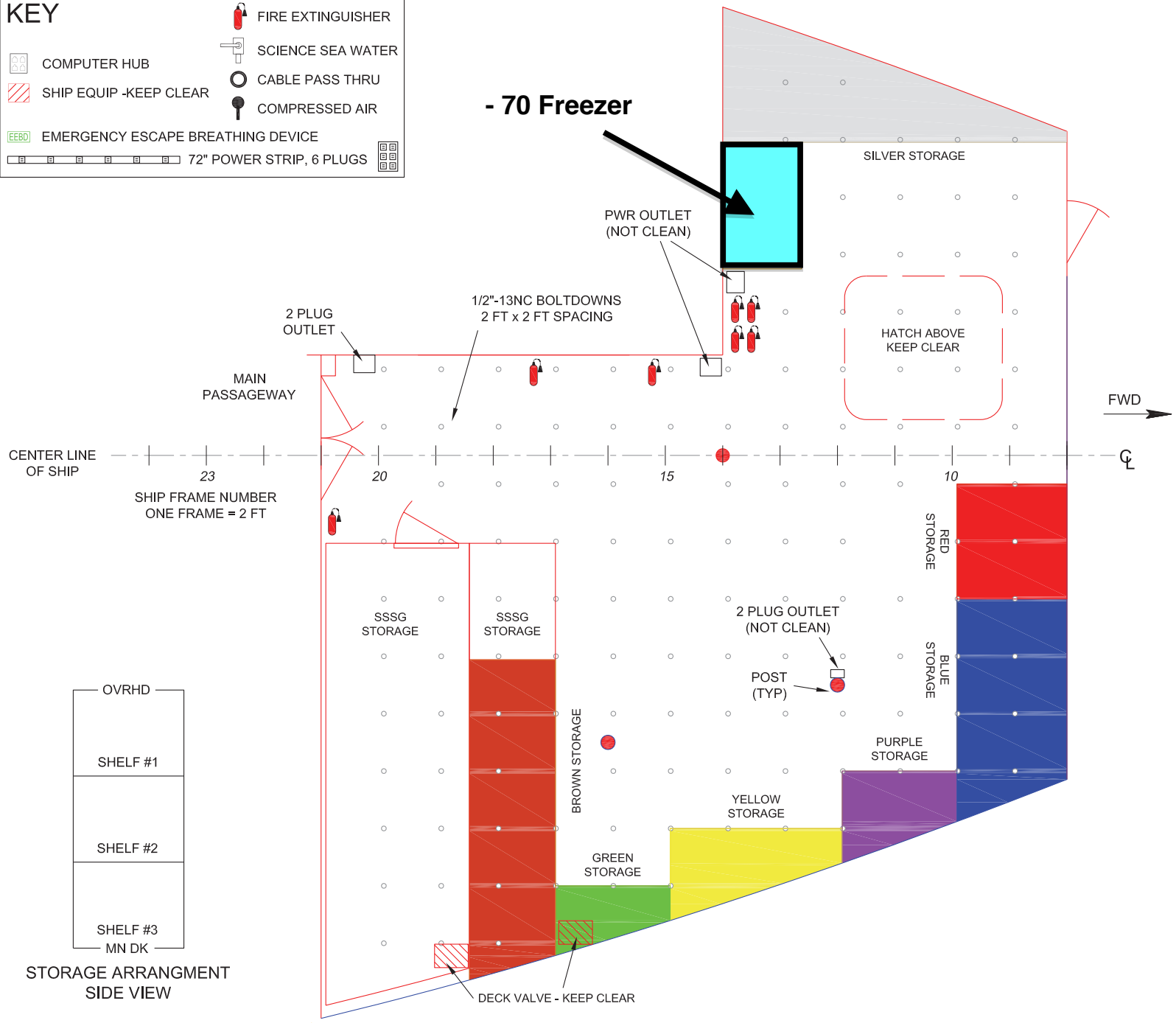
Ice

-70 Freezer and upright "dead" refrigerator/freezer

KEY

-  COMPUTER HUB
-  SHIP EQUIP -KEEP CLEAR
-  EMERGENCY ESCAPE BREATHING DEVICE
-  72" POWER STRIP, 6 PLUGS
-  FIRE EXTINGUISHER
-  SCIENCE SEA WATER
-  CABLE PASS THRU
-  COMPRESSED AIR

- 70 Freezer



SCIENTIFIC STOREROOM ARRANGEMENT
Atlantis Main Deck, Room 1-8-0

KEY



COMPUTER HUB



SHIP EQUIP -KEEP CLEAR



EMERGENCY ESCAPE BREATHING DEVICE



72" POWER STRIP, 6 PLUGS



FIRE EXTINGUISHER



SCIENCE SEA WATER



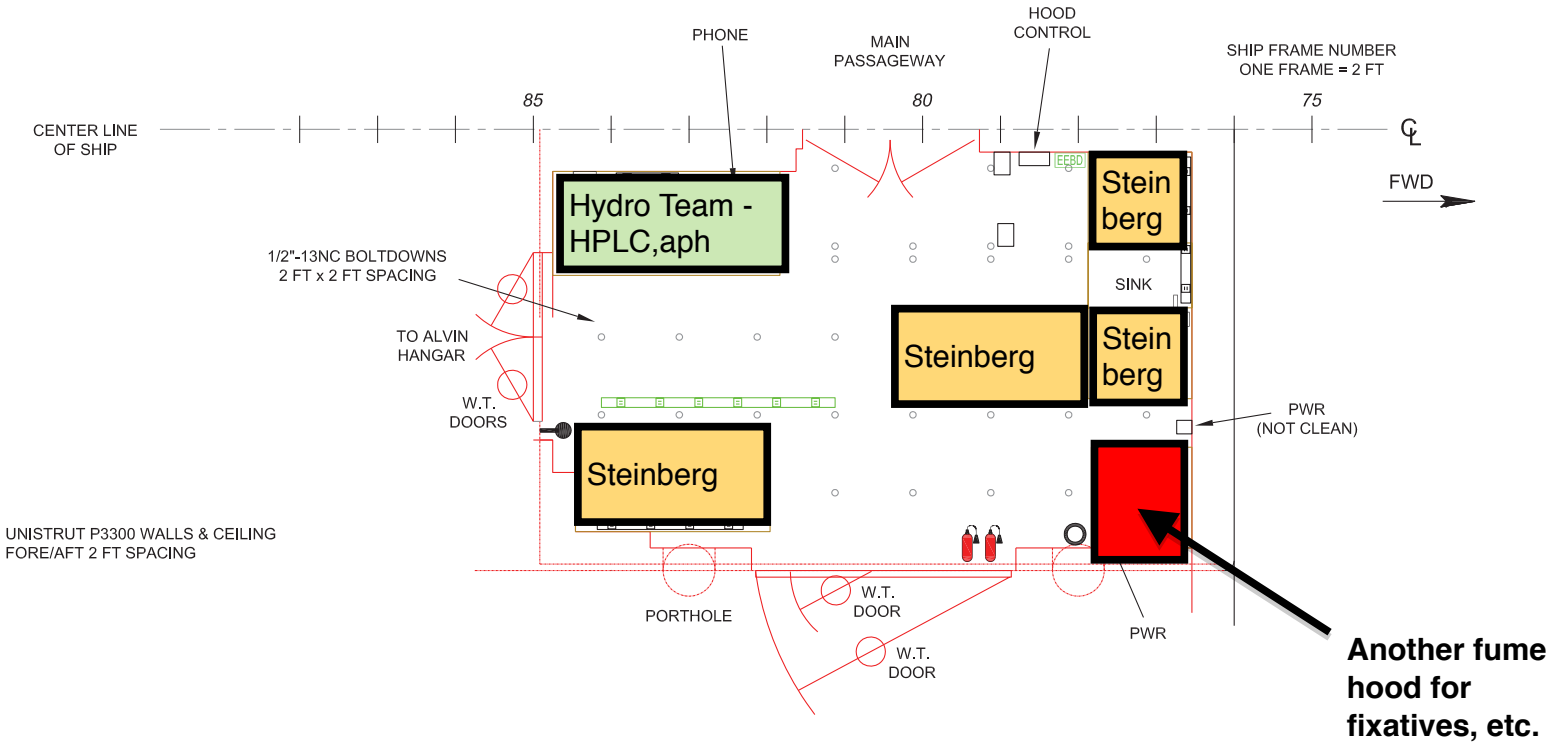
CABLE PASS THRU



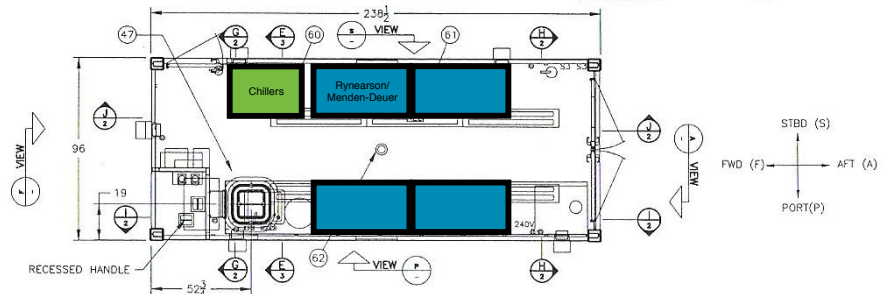
COMPRESSED AIR

UNISTRUT:
BULKHEADS
2 FT SPACING
OVERHEAD FORE/AFT,
FULL LENGTH OF LAB

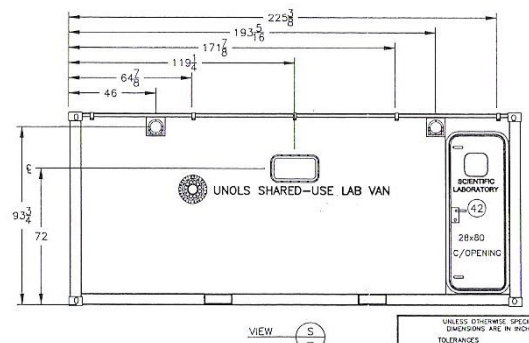
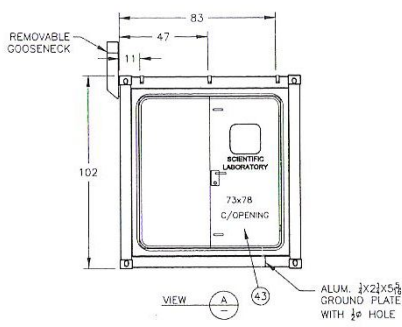
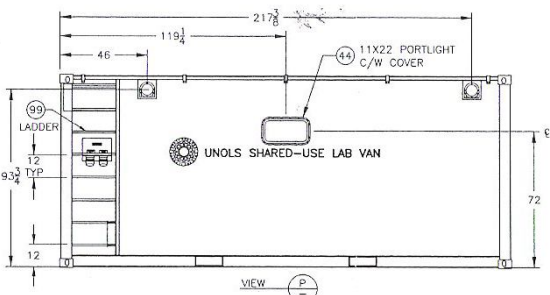
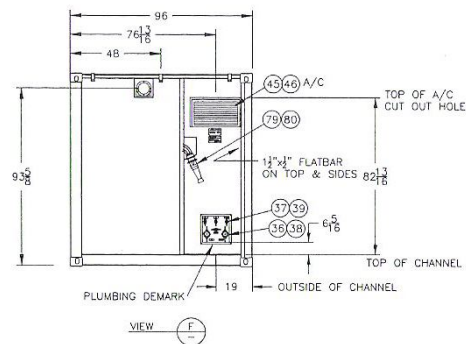
ALL POWER CLEAN UNLESS NOTED



WET LABORATORY
Atlantis Main Deck, Rm 1-76-1



| REVISIONS | | | | |
|-----------|-----|---------------------|------|----------|
| ZONE | LTR | DESCRIPTION | DATE | APPROVED |
| | | ISSUED FOR APPROVAL | | |
| | | | | |
| | | | | |
| | | | | |



THIS IS A PROPRIETARY DESIGN OF SONIC ENCLOSURES LTD. MANUFACTURE, REPRODUCTION OR USE OF ANY ASSEMBLY, SUBASSEMBLY OR PART IS NOT PERMISSIBLE EXCEPT IF EXPRESSLY PRIOR AUTHORIZED IN WRITING BY SONIC ENCLOSURES LTD.

| | | | | | | |
|---|-----------------------------------|--------------------------|--------------------------|---|---------|----------------------------|
| <small>UNLESS OTHERWISE SPECIFIED DIMENSIONS ARE IN INCHES TOLERANCES</small> <small>FRACTIONAL ± 1/16"</small> <small>DECIMAL ± .005"</small> <small>ANGULAR ± 15'</small> <small>DO NOT SCALE DRAWING</small> | CONTRACT No. 625 4 03 | DATE 25 MAR 04 | | 7127 HONEYMAN ST DELTA B.C. V4G 1E2 PH - 604 948-6100 FX - 604 948-6987 | | |
| | DRAWN DAVE D. | CHECK | | TITLE GENERAL ARRANGEMENT STANDARD ALUMINUM VAN GENERAL PURPOSE | | |
| | DESIGN DAVE D. | DESIGN ACTIVITY | DATE 25 MAR 04 | SIZE | FSCM NO | DWG No 625403-02 |
| | CUSTOMER UNOLS(W.COAST) | SCALE NTS | RELEASE DATE | SHEET 1 | | |

