

# QPE Remote Sensing

**Hans C. Graber and Michael J. Caruso**

CSTARS – University of Miami

**Quantifying, Predicting, and Exploiting Uncertainty Planning Meeting  
Kauai, Hawaii 12-16 January 2009**



January 12, 2009

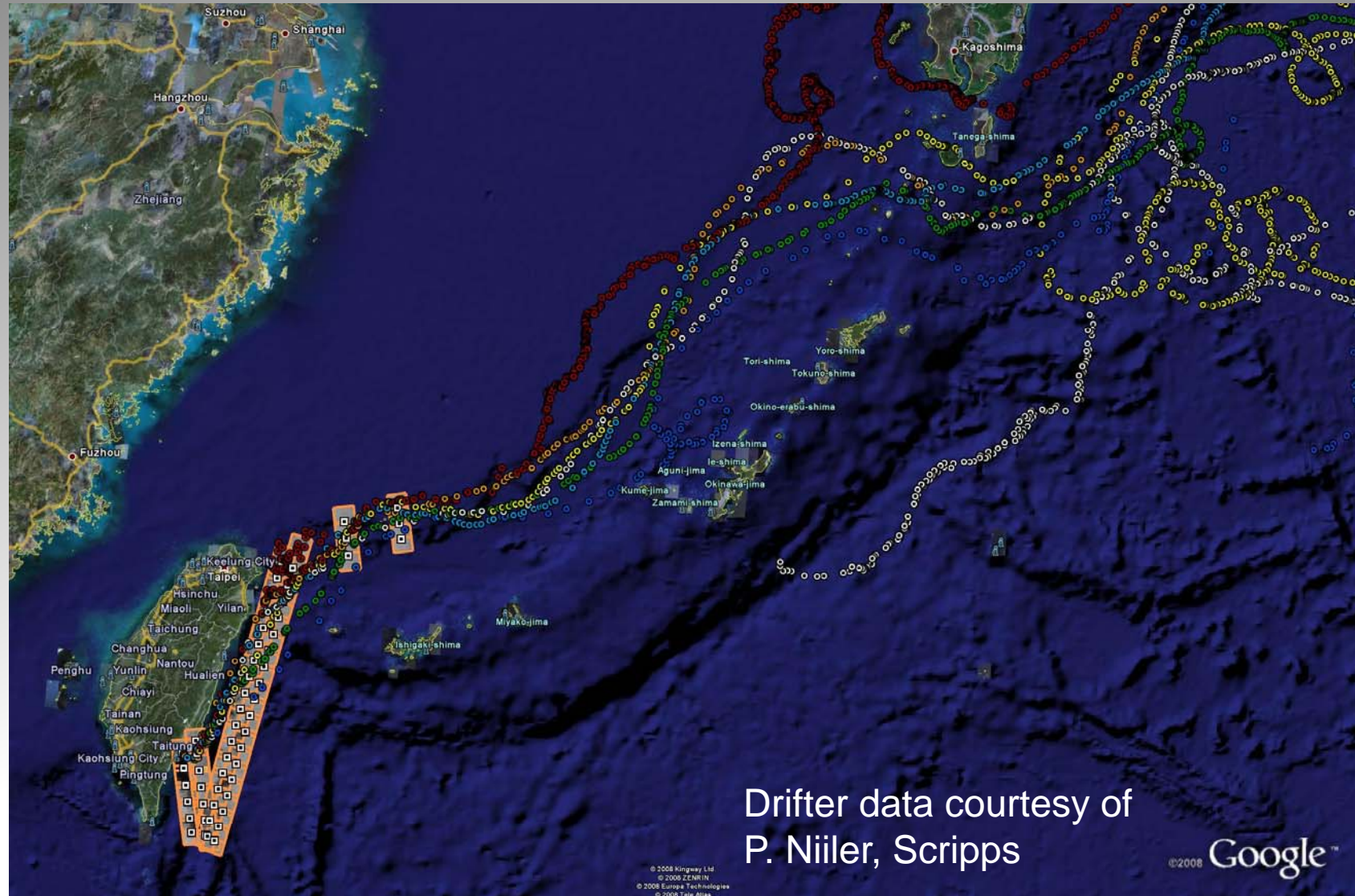


UM/CSTARS



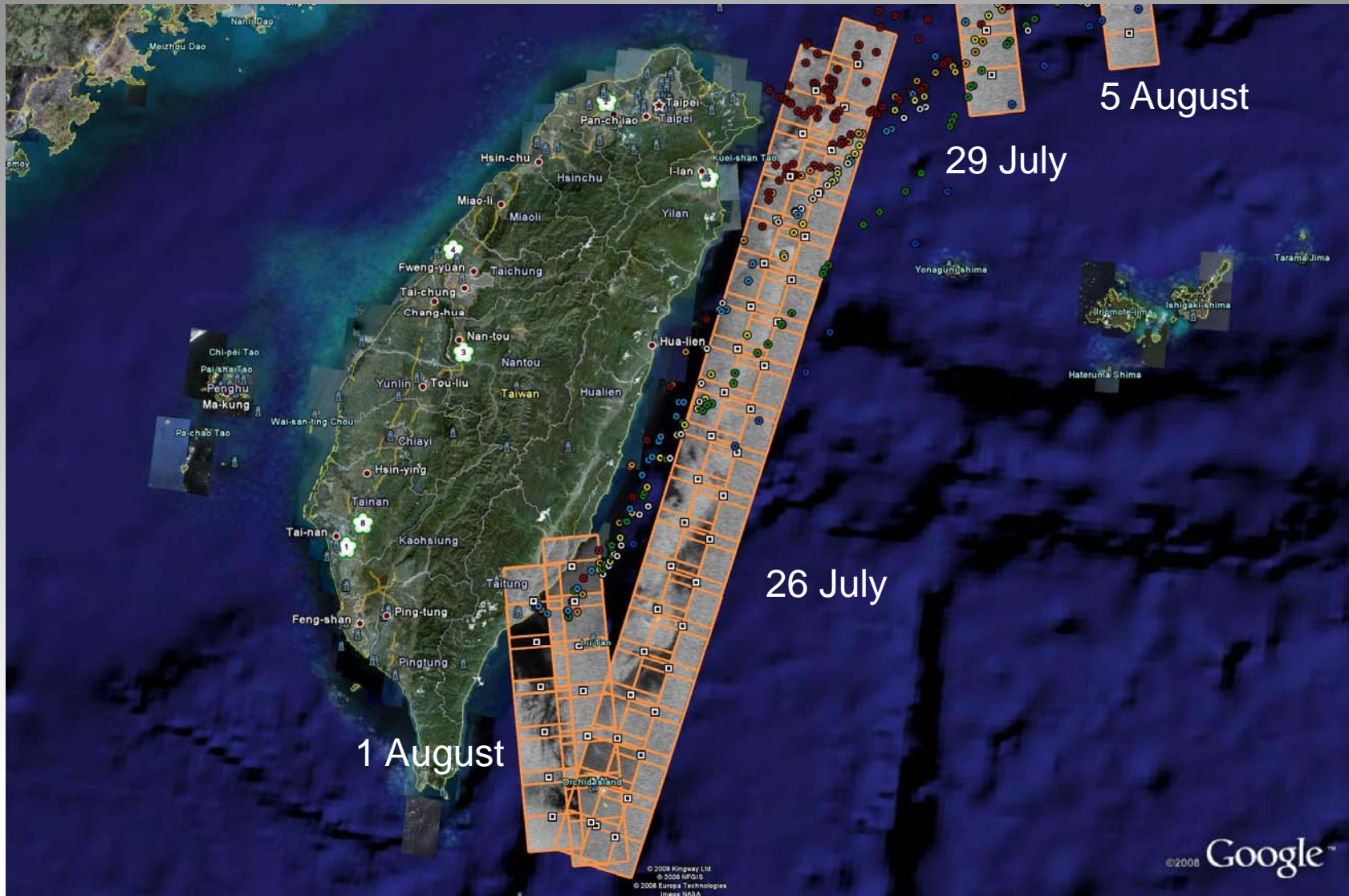
1

# History of Drifters starting 1 June 2008



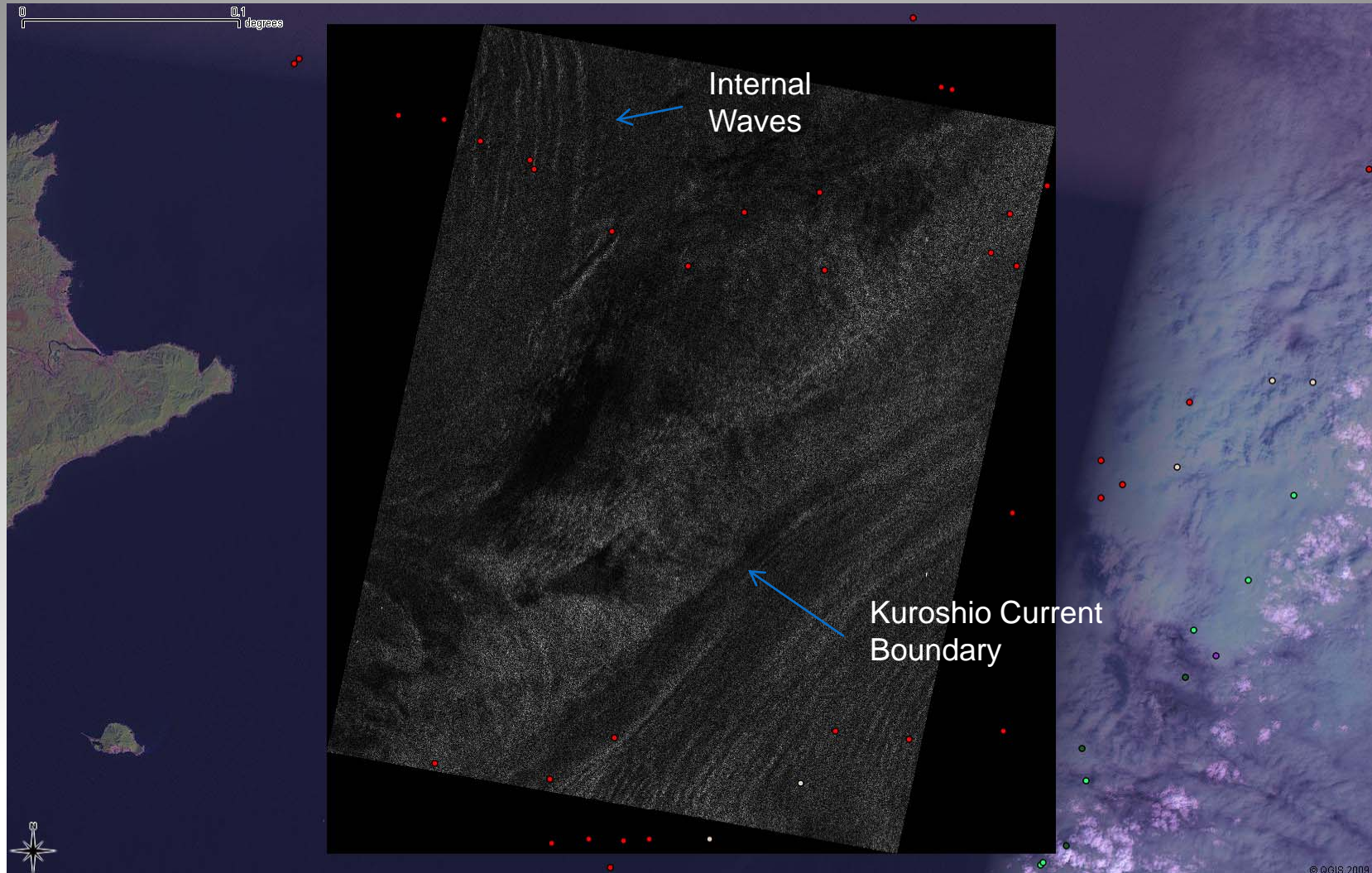


# RadarSat-2 Collections July and August 2008

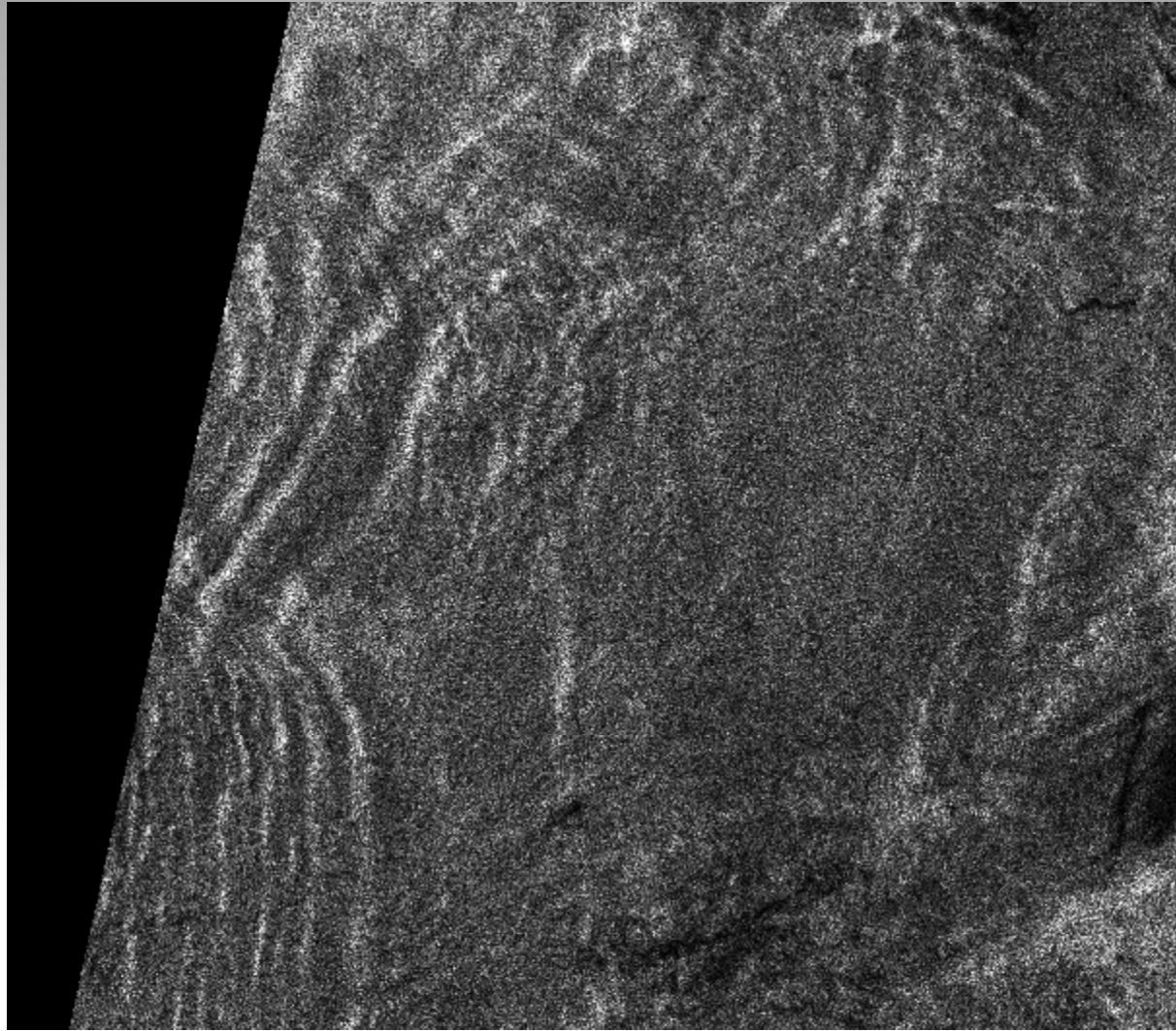






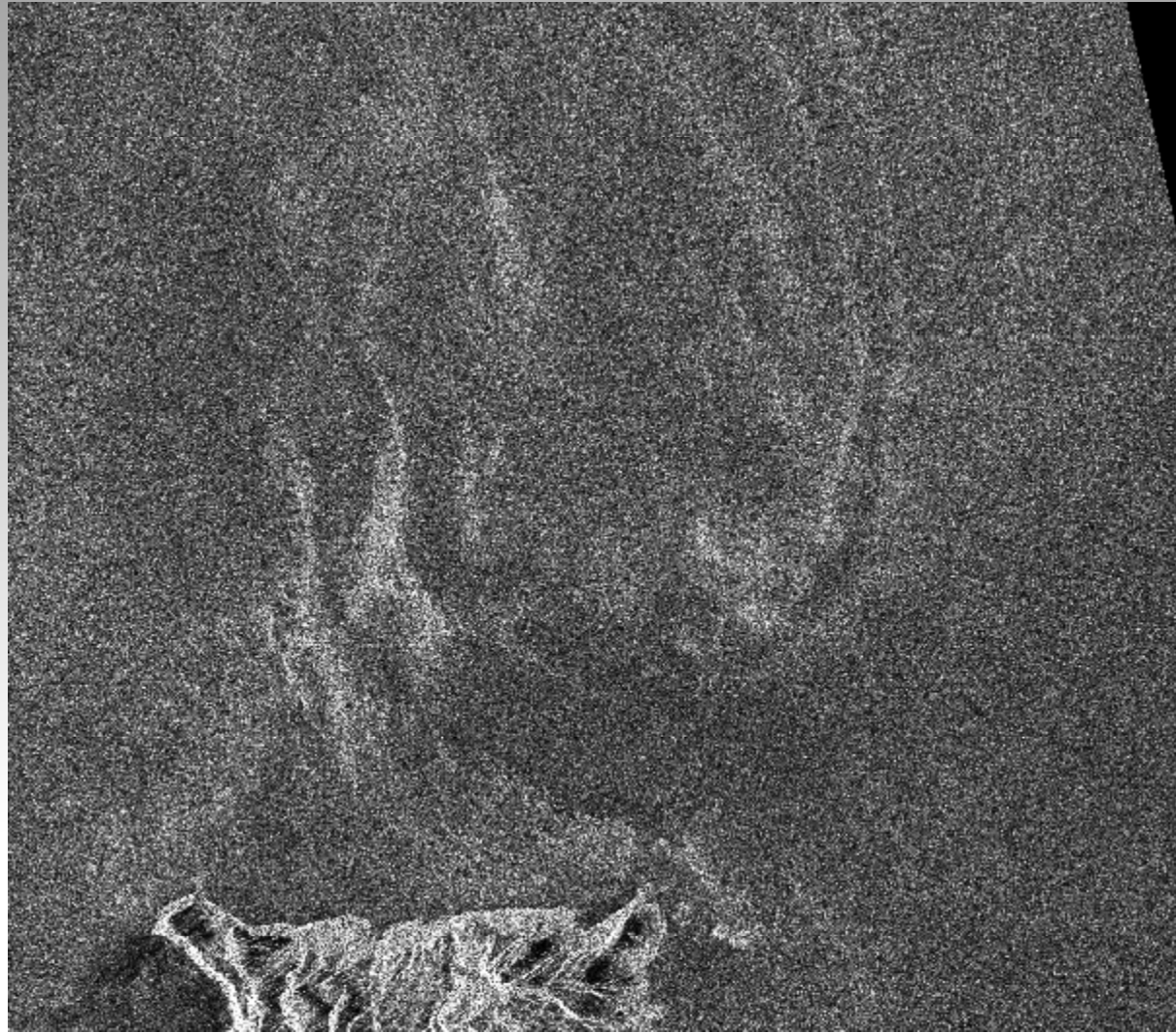


# Internal Waves Near North East Taiwan

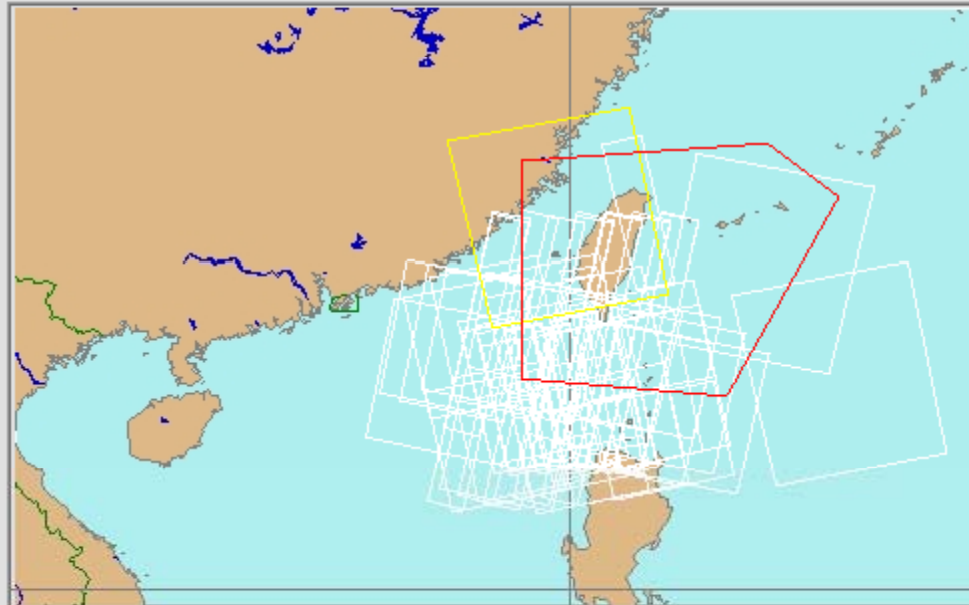




# Ocean feature near Orchid Island Taiwan



Apex Commander



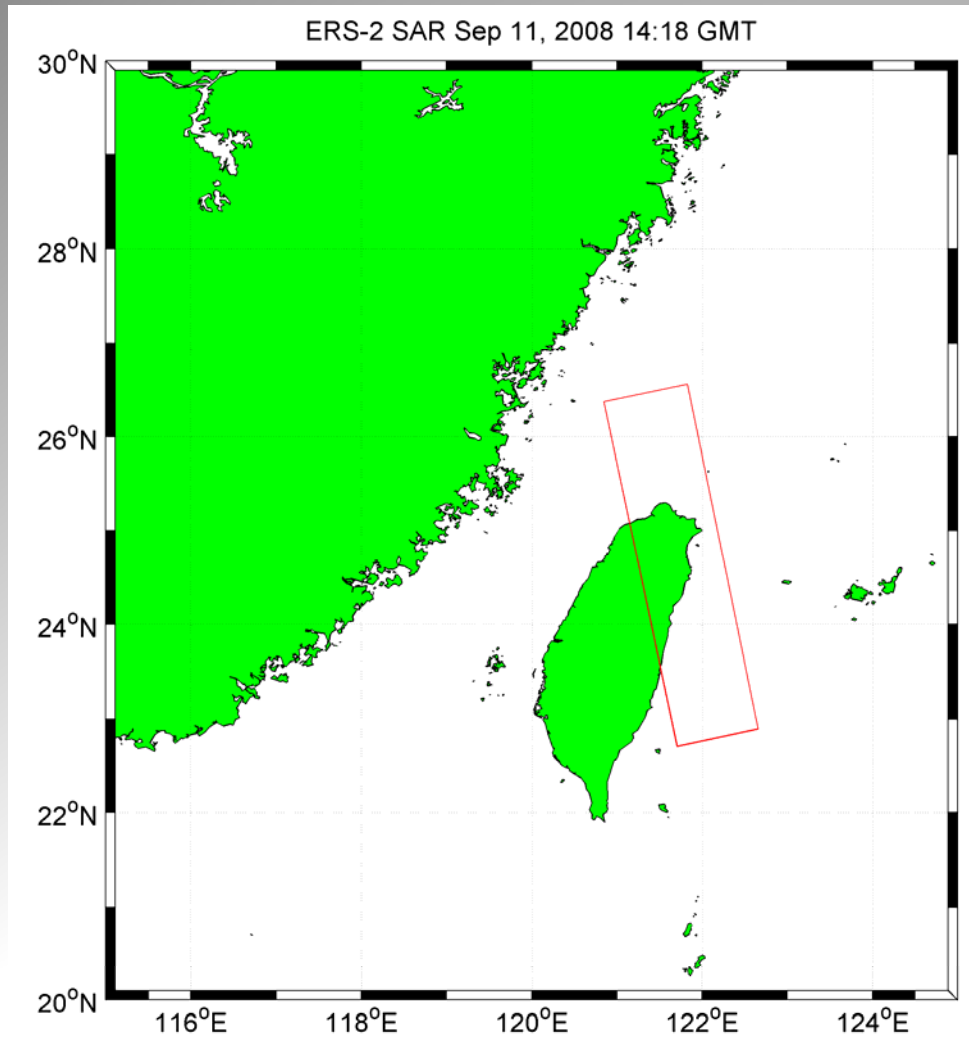
Upper Left (Lat,Lon) 
 Lower Right (Lat,Lon) 
 Cursor (Lat,Lon)

Catalog Browse Query Results					
Workorder	Sat	Inst	Date		
IN_HANS_e2_70033...	ERS2	ERS2	2008-09-11 14:18:28...	LO	
IN_HANS_e2_69661...	ERS2	ERS2	2008-08-16 14:35:03...	LO	
IN_HANS_080816_E...	ENVISAT1	ASAR	2008-08-16 14:04:31...	LO	
IN_HANS_e2_63670...	ERS2	ERS2	2007-06-25 02:24:08...	LO	
IN_HANS_e2_63441...	ERS2	ERS2	2007-06-09 02:27:00...	LO	
IN_HANS_e2_63398...	ERS2	ERS2	2007-06-06 02:21:16...	LO	
IN_HANS_e2_63212...	ERS2	ERS2	2007-05-24 02:29:56...	LO	
IN_HANS_e2_63026...	ERS2	ERS2	2007-05-11 02:38:34...	LO	
IN_HANS_e2_62940...	ERS2	ERS2	2007-05-05 02:27:04...	LO	
IN_HANS_e2_62897...	ERS2	ERS2	2007-05-02 02:21:18...	LO	
IN_HANS_e2_62754...	ERS2	ERS2	2007-04-22 02:35:40...	LO	
IN_HANS_e2_62711...	ERS2	ERS2	2007-04-19 02:29:56...	LO	
IN_HANS_e2_62668...	ERS2	ERS2	2007-04-16 02:24:11...	LO	
IN_HANS_e2_62525...	ERS2	ERS2	2007-04-06 02:38:35...	LO	
IN_HANS_e2_62482...	ERS2	ERS2	2007-04-03 02:32:50...	LO	
IN_HANS_e2_62647...	ERS2	ERS2	2007-04-14 14:33:04...	LO	
IN_HANS_051002_R...	RSAT1	RSAT1	2005-10-02 10:01:37...	LO	
IN_HANS_050803_R...	RSAT1	RSAT1	2005-08-03 21:33:49...	LO	
IN_HANS_050716_R...	RSAT1	RSAT1	2005-07-16 09:35:23...	LO	
IN_HANS_e2_63649...	ERS2	ERS2	2007-06-23 14:33:00...	LO	
IN_HANS_e2_63563...	ERS2	ERS2	2007-06-17 14:21:31...	LO	
IN_HANS_e2_63606...	ERS2	ERS2	2007-06-20 14:27:15...	LO	
IN_HANS_e2_63334...	ERS2	ERS2	2007-06-01 14:24:29...	LO	
IN_HANS_e2_62876...	ERS2	ERS2	2007-04-30 14:30:10...	LO	
IN_HANS_e2_62833...	ERS2	ERS2	2007-04-27 14:24:29...	LO	
IN_HANS_e2_63148...	ERS2	ERS2	2007-05-19 14:33:04...	LO	
IN_HANS_e2_63105...	ERS2	ERS2	2007-05-16 14:27:35...	LO	
IN_HANS_e2_63062...	ERS2	ERS2	2007-05-13 14:21:35...	LO	
IN_HANS_e2_62790...	ERS2	ERS2	2007-04-24 14:18:45...	LO	
IN_HANS_e2_63377...	ERS2	ERS2	2007-06-04 14:30:09...	LO	
IN_HANS_070525_R...	RSAT1	RSAT1	2007-05-25 10:00:24...	LO	
IN_HANS_070525_R...	RSAT1	RSAT1	2007-05-25 09:59:43...	LO	
IN_HANS_e2_62604...	ERS2	ERS2	2007-04-11 14:27:19...	LO	
IN_ENVISAT1_20070...	ENVISAT1	ASAR	2007-04-29 01:47:48...	LO	
IN_ENVISAT1_20070...	ENVISAT1	ASAR	2007-04-27 13:55:53...	LO	
IN_HANS_070425_R...	RSAT1	RSAT1	2007-04-25 21:59:11...	LO	
IN_HANS_070422_R...	RSAT1	RSAT1	2007-04-22 21:46:45...	LO	
IN_HANS_070421_R...	RSAT1	RSAT1	2007-04-21 09:52:10...	LO	
IN_HANS_070421_R...	RSAT1	RSAT1	2007-04-21 09:51:27...	LO	
IN_HANS_070418_R...	RSAT1	RSAT1	2007-04-18 22:03:20...	LO	
IN_HANS_070417_R...	RSAT1	RSAT1	2007-04-17 10:08:49...	LO	

Collection mainly from NLIWI in 2007  
Some in August/September 2008

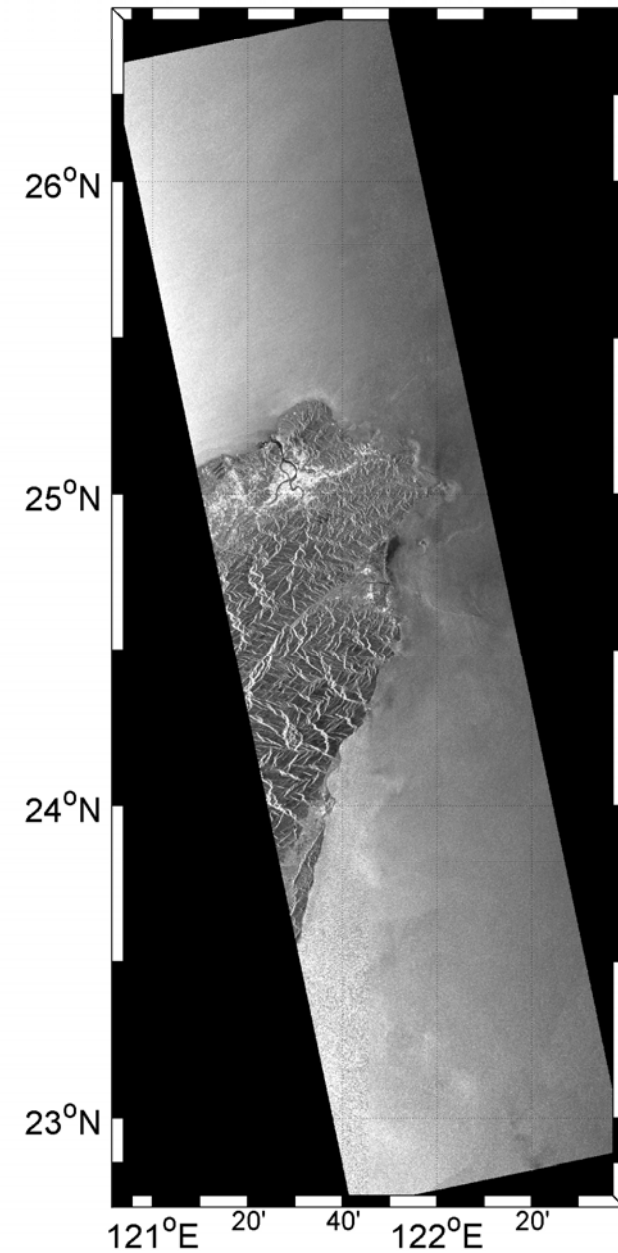


# ERS-2 Collection



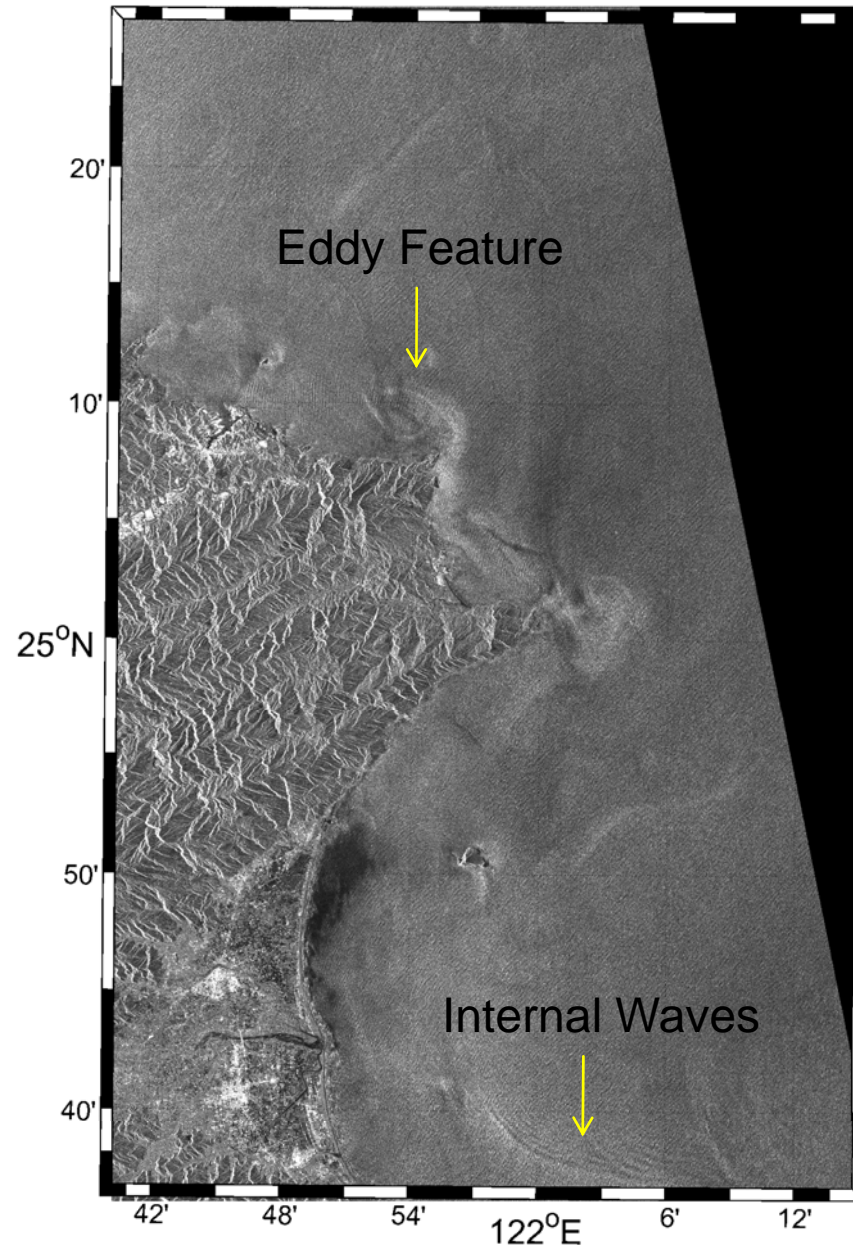
January 12, 2009

UM/CSTARS



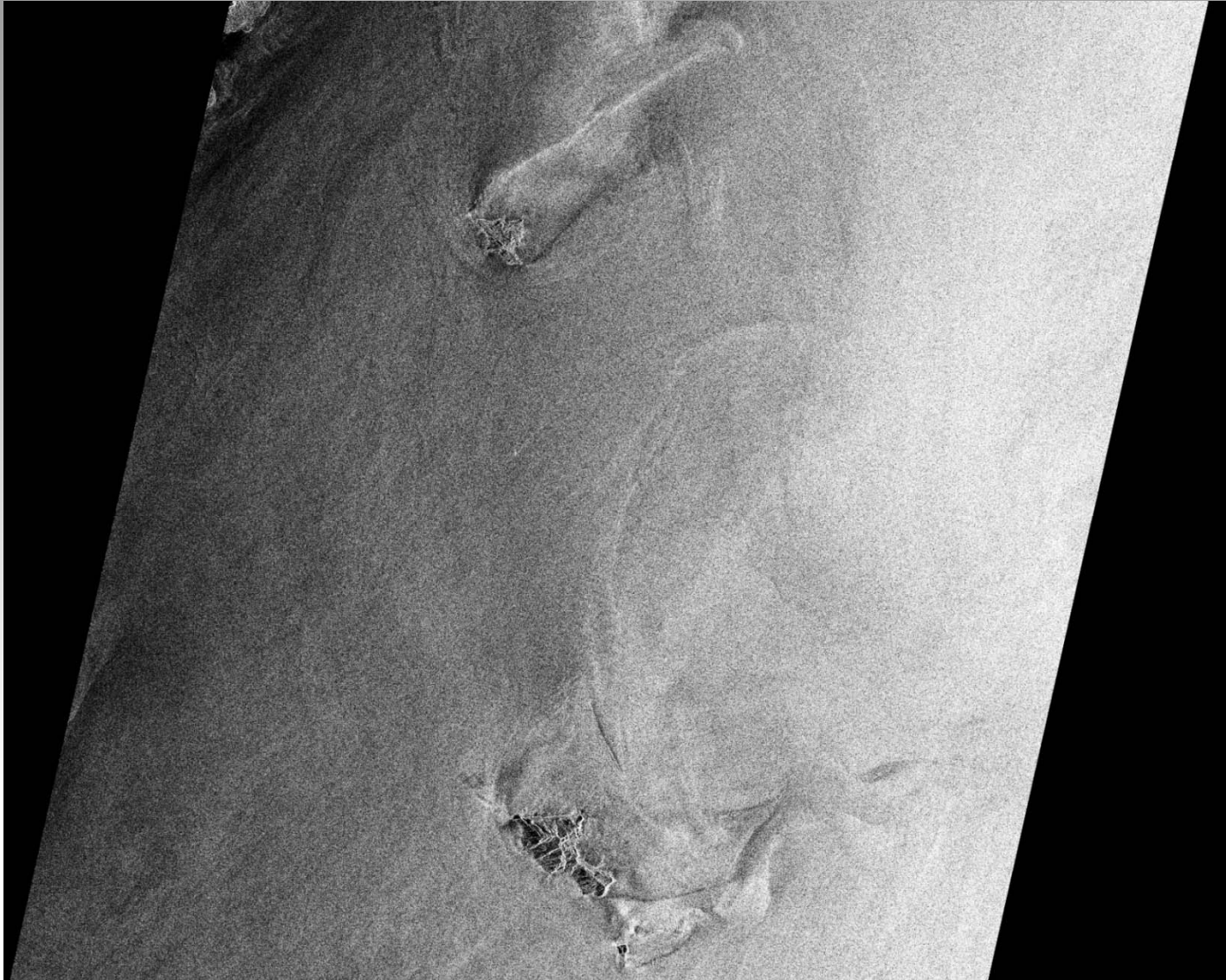
# ERS-2 Collection Details off Taiwan

ERS-2 SAR Sep 11, 2008 14:18 GMT



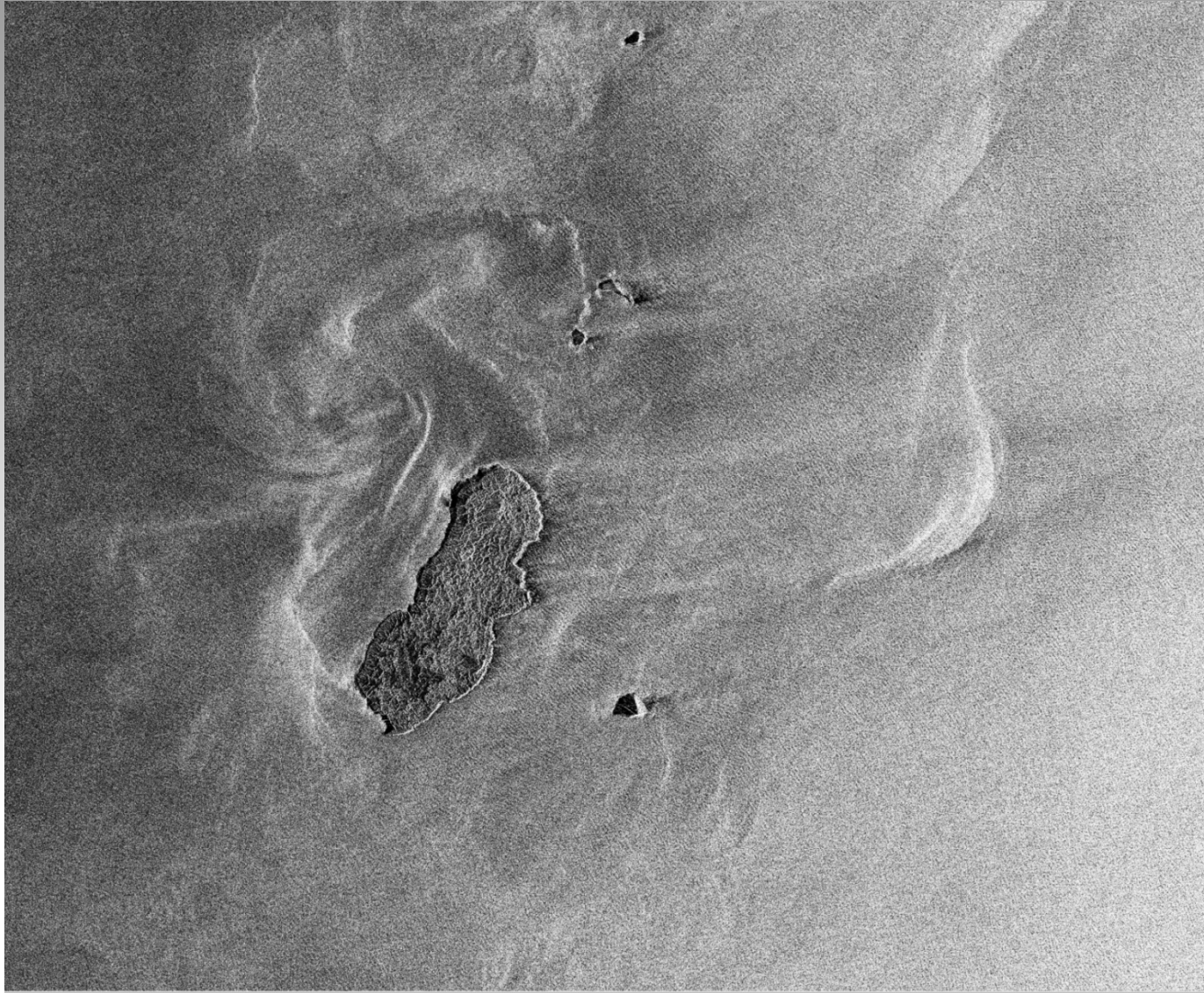


# ERS-2 Collection Details of Lutao Orchid Island

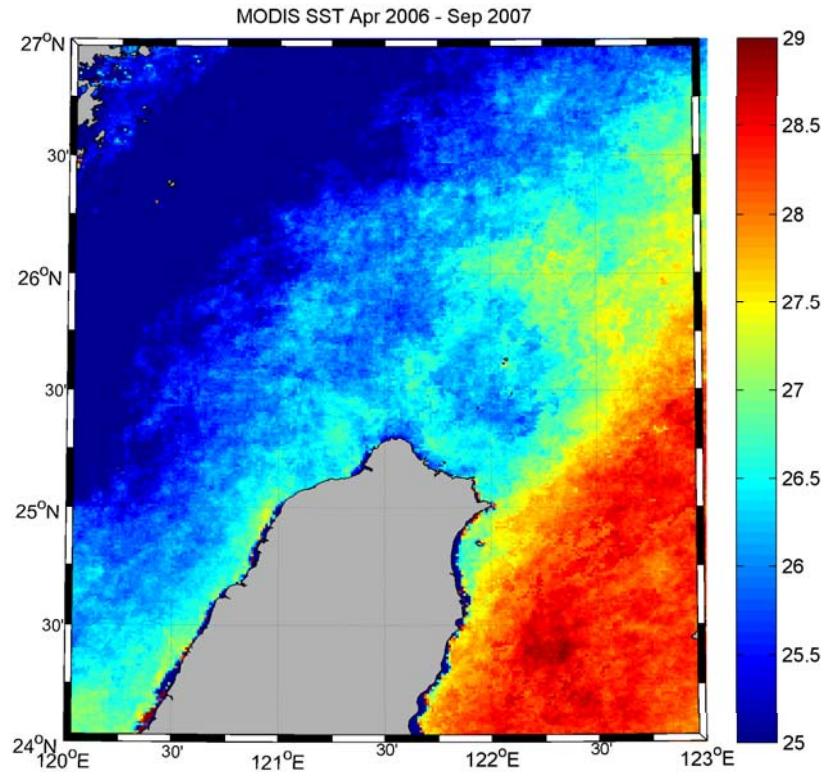




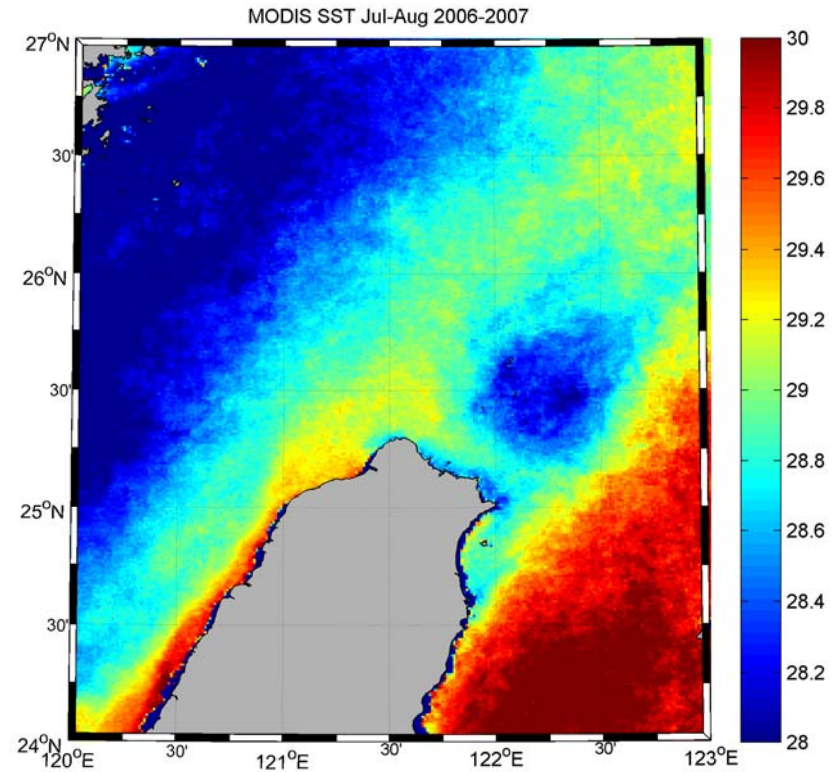
# ERS-2 Collection Details of Itbayat Island



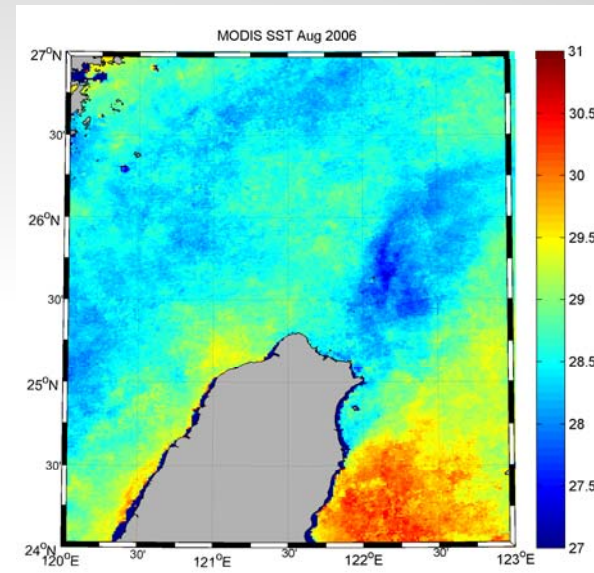
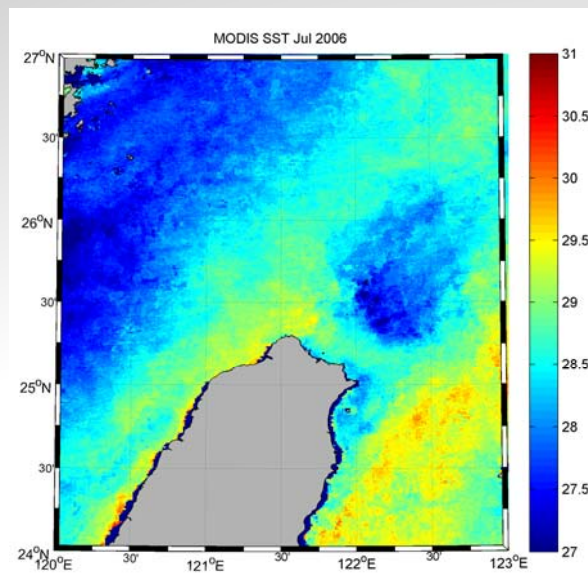
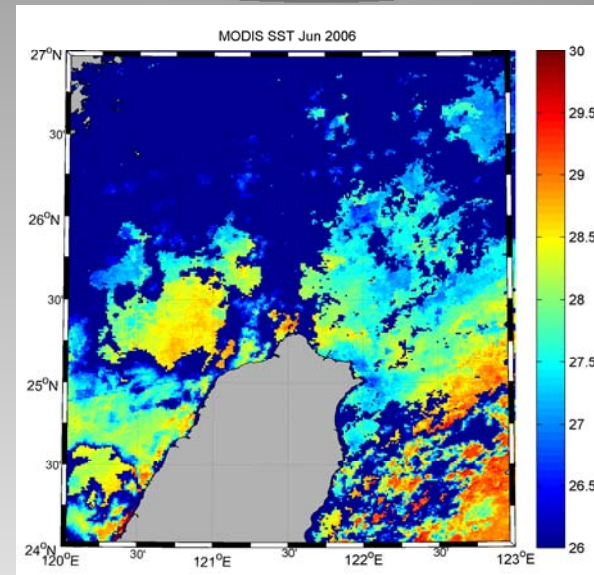
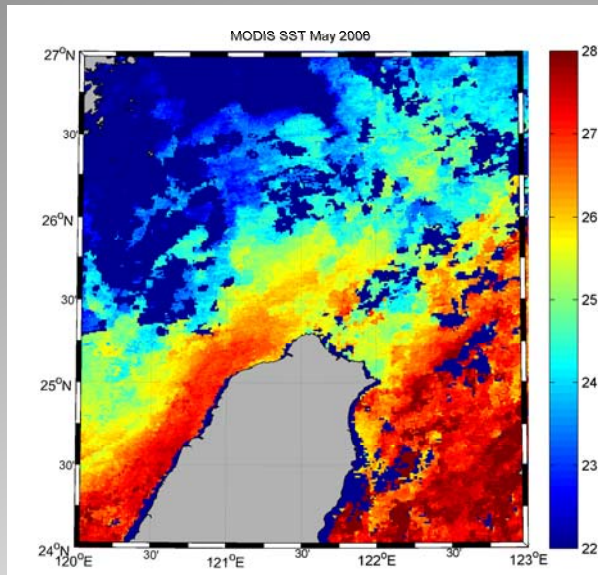




**Mean SST from  
April 2006 to September 2007**



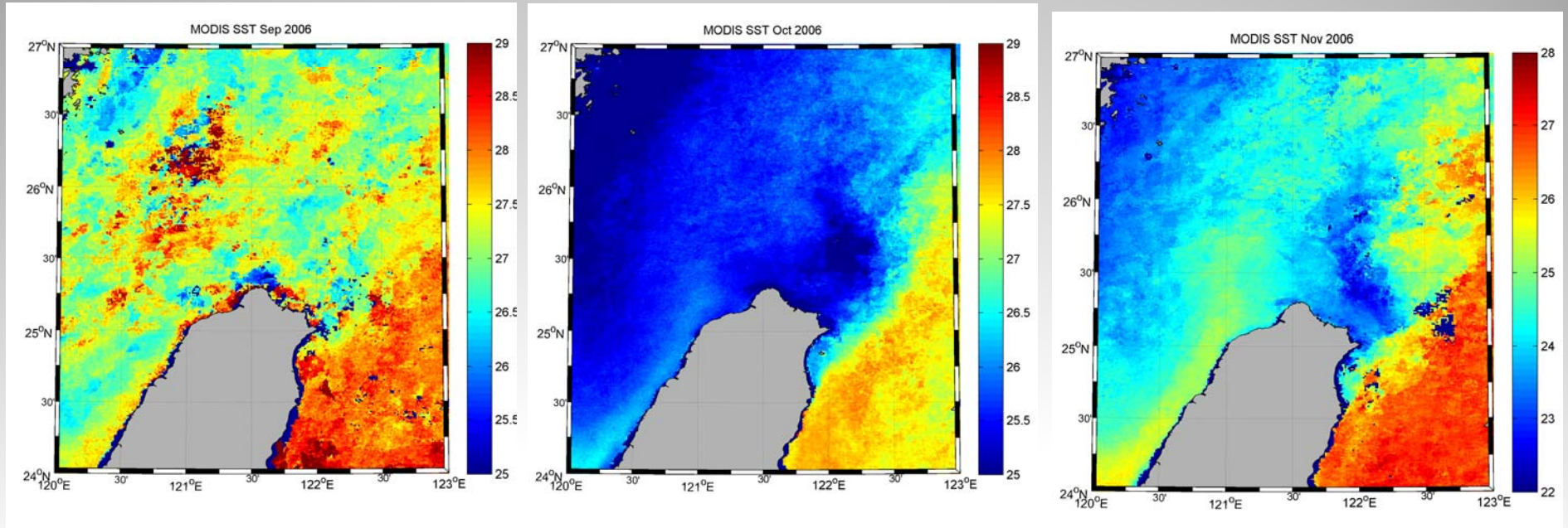
**Mean SST from  
July and August 2006 and 2007.**



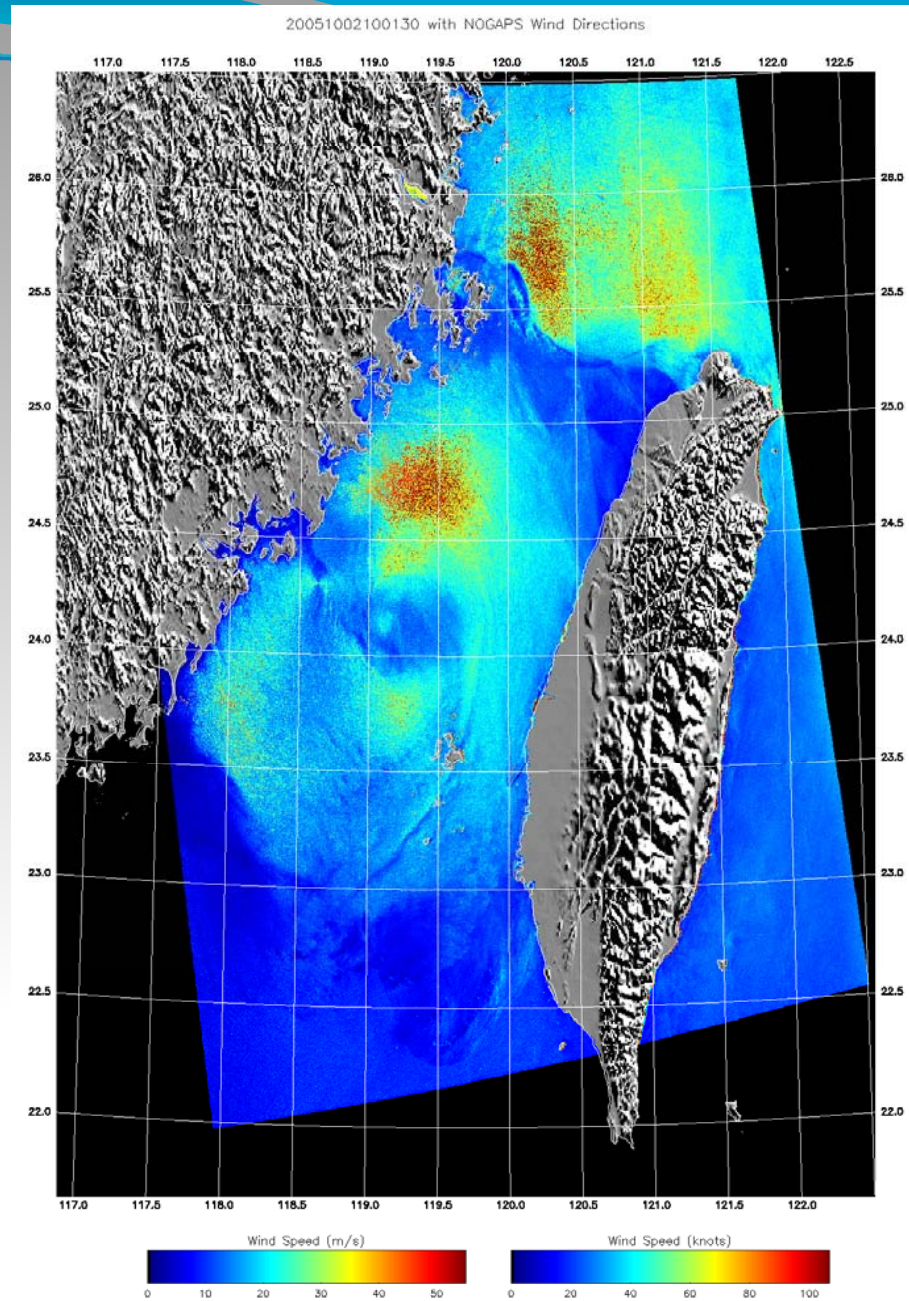




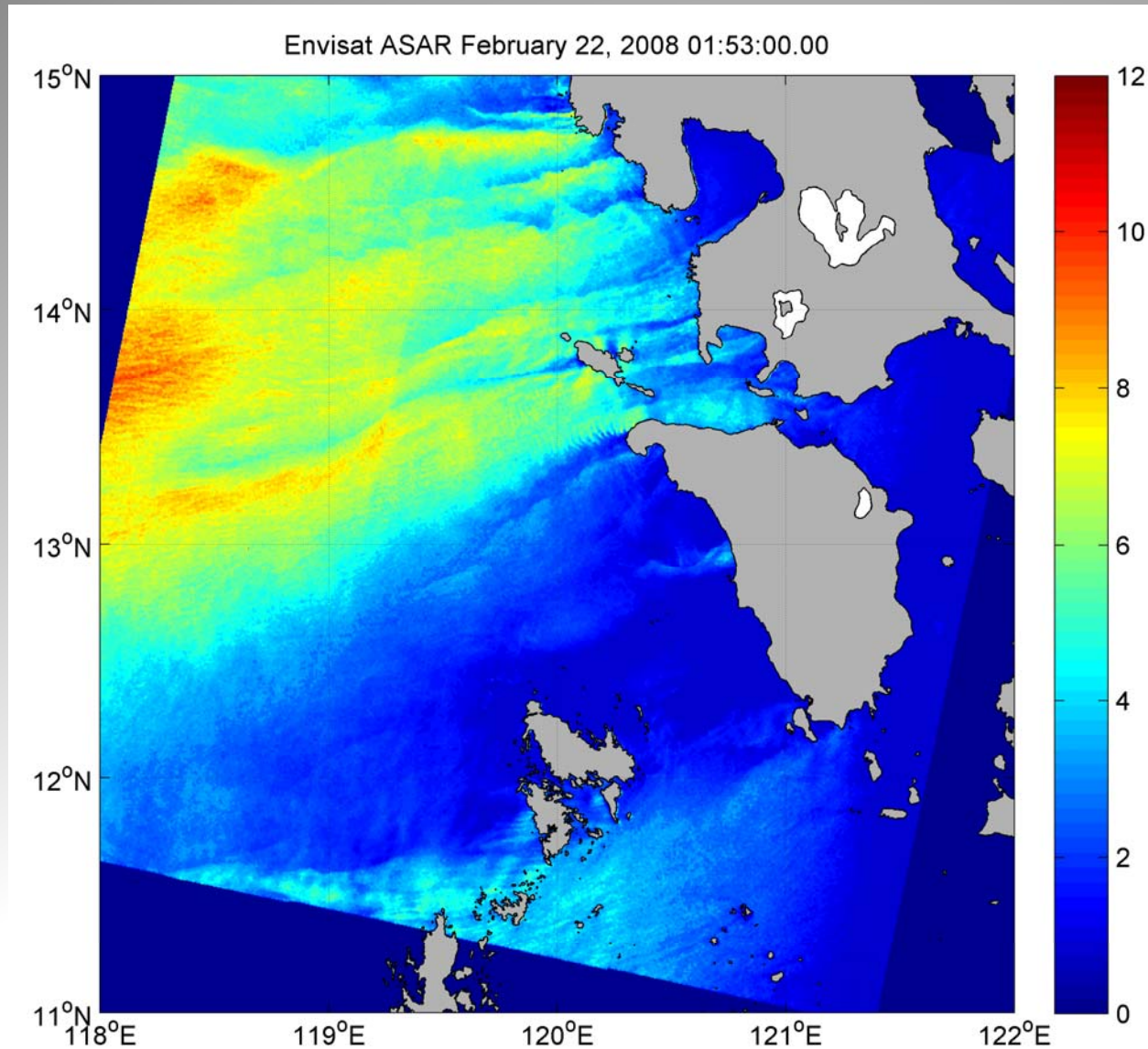
# CSTARS Cold Dome with MODIS SST



# High Resolution Wind Field of Typhoon East of Taiwan from SAR Satellite







**Note the gap winds and the extent of the wind shadows as well as filaments of strong winds extending seaward.**

**Note vortices coming off the northern tip of Mindoro.**

- **Acquire available archive data of both EO and SAR historical images**
- **Develop coordinated collection plan of SAR images from RadarSat-1, ERS-2 and ENVISAT, but also RadarSat-2, PALSAR, TerraSAR-X and Cosmo-SkyMed**
- **Develop collection plan of electro-optical (SPOT 2/4, MODIS, MERIS, perhaps others) images**
- **Provide satellite imagery in timely way on website**